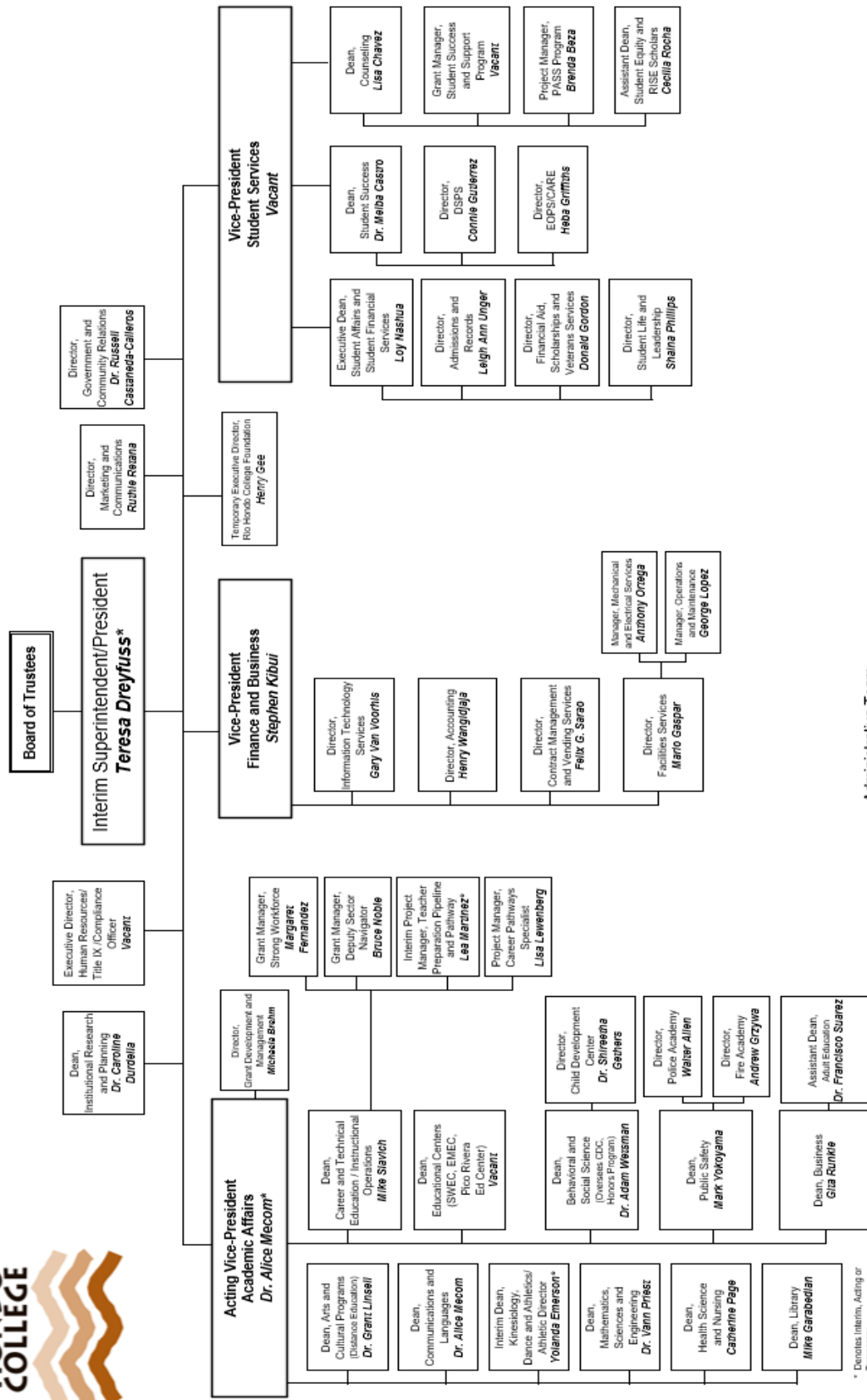




# Rio Hondo College Organizational Chart

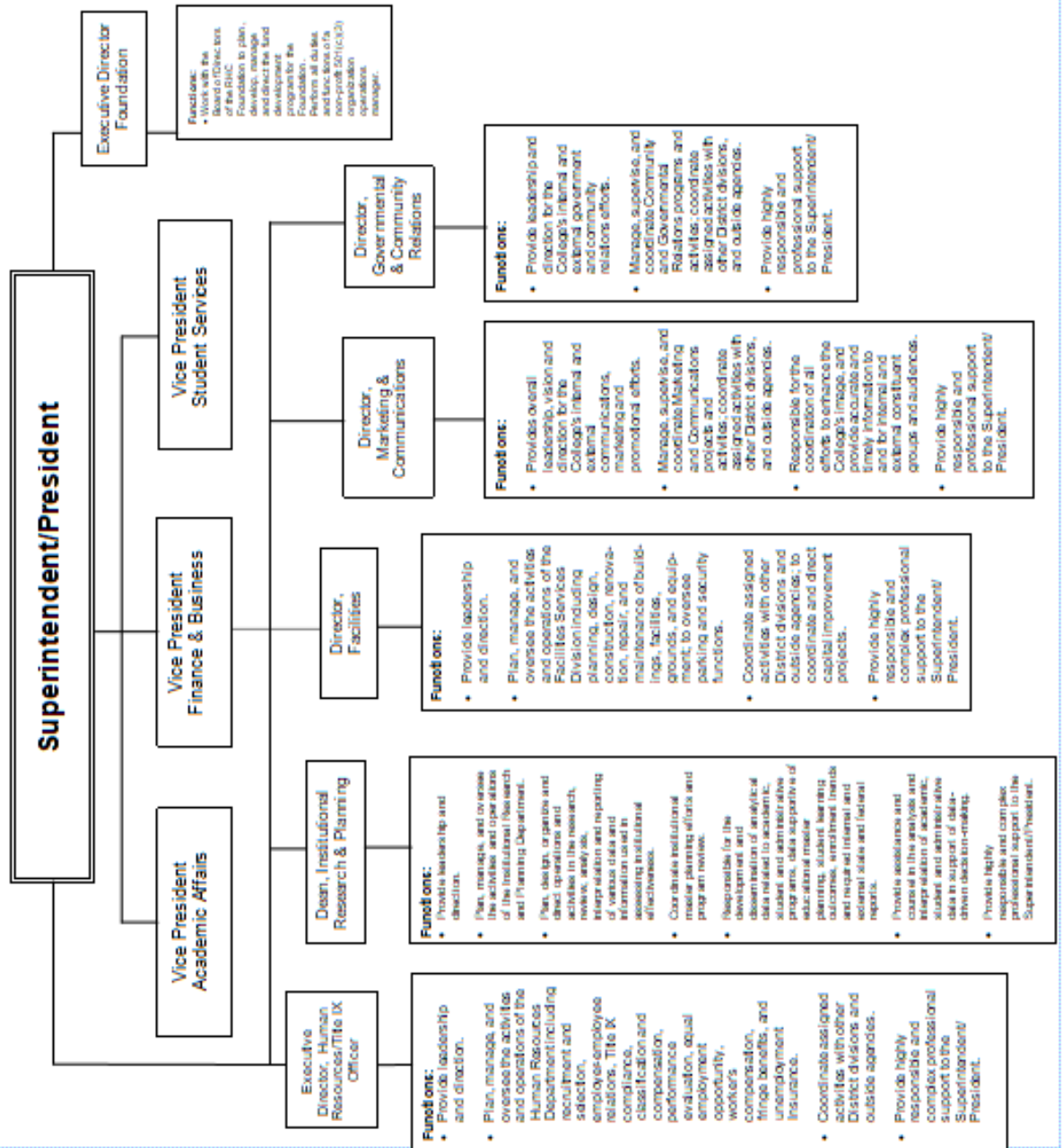


Administrative Team

Eff. 03/11/21 at

\* Denotes Interim, Acting or Temporary

# Superintendent/President



## Functions:

- Chief Executive Officer (State Reporting)
  - Attend all Board meetings and make recommendations related to budget, policies, personnel, salary schedule for certificated and classified personnel.
  - Keep the Board of Trustees fully informed of campus matters.
  - Ensure Board Policies are reviewed, followed, and developed as needed to meet the needs of the District and ensure compliance with applicable laws and regulations.
  - Provide overall leadership for the college's accreditation process.
  - Formulate reports requested by local, county, state, and/or federal agencies.
  - Oversee College Governance (Committees, Policies and Procedures, Structure).
  - Promote the college's image and oversee public information.
  - Provide leadership for the oversight of planning and development of instructional and student services programs; fiscal management; human resources, building program, technology; facilities, community and governmental relations.
  - Plan, organize, direct and evaluate the activities of the college pursuant to district and college vision, mission, Educational and Facilities Master Plans.
  - Promote participatory governance that is accountable, with an inclusive management style, promote collegial consultation.
  - Demonstrate a commitment to diversity and provide leadership as the college meets the educational needs of a diverse and changing community.
  - Provide leadership in working with business and industry as the college maintains and/or develops state of the art, career and technical education programs.
  - Provide leadership in the development and implementation of an enrollment management plan to achieve and maintain enrollment targets.
  - Provide leadership to the Rio Hondo College Foundation.
- Committee Responsibilities:**
- President's Council
  - President's Cabinet
  - Administrative Council
  - Planning and Fiscal Council
  - Governance Committees