



Class Schedule Summer 2016



Start Rio... Go Anywhere

RIO HONDO COLLEGE
www.riohondo.edu

Welcome to Rio Hondo College's Summer Session 2016!



**RIO
HONDO
COLLEGE**



www.riohondo.edu

Our robust program of academic instruction provides students with a host of options, whether you are pursuing a two-year degree in preparation for transfer to a four-year university, seeking certification in one of our many career training programs, exploring an enrichment opportunity, or hoping to strengthen job skills.

Rio Hondo College offers 21 associate degrees that offer a guarantee of admission to the California State University system, a list that ranges from early childhood education to history, from psychology to Spanish.

The College also offers 50 local associate degree programs and a four-year Bachelor of Science degree in automotive technology as part of a historic state initiative.

Students who are considering law school would do well to look up our program offering a Pathway to Law School in partnership with six top state laws schools.

Students may also seek certification in 60 disciplines, including our highly regarded nursing, police and fire training academies.

Taken together, the program presents a comprehensive list of options that allows

students to grow academically and explore new career options without incurring substantial financial costs.

Once enrolled, Rio Hondo College students enjoy a similarly comprehensive system of support services. We offer summer bridge classes for our fall students, to ensure they have time to prepare for the rigor of our math and English classes.

We offer a number of tutoring programs, scholarship aid and other supports as appropriate to student needs. Specialty programs provide targeted aid for veterans, first year students, students returning after a lengthy break from their education and special education students.

Lastly, we offer our programs not only at Rio Hondo College's primary campus, but also at convenient satellite locations in South Whittier and El Monte, our Santa Fe Springs Regional Training Center, and at a variety of area high schools and adult schools.

At Rio Hondo, our focus is on ensuring student success.

Remember, start Rio, go anywhere!

**Superintendent/President
Teresa Dreyfuss**

MISSION STATEMENT

Rio Hondo College is committed to the success of its diverse students and communities by providing dynamic educational opportunities and resources that lead to degrees, certificates, transfer, career and technical pathways, basic skills proficiency, and lifelong learning.

ACCREDITATION

Western Association of Schools and Colleges Board of Governors, California Community Colleges Rio Hondo College is accredited by the Accrediting Commission for Community and Junior Colleges of the Western Association of Schools and Colleges, (10 Commercial Blvd., Ste. 204 Novato, CA 94949 (415) 506- 0234 Telephone • (415) 506-0238 FAX), an institutional accrediting body recognized by the Commission on Recognition of Postsecondary Accreditation and the U.S. Department of Education.

Rio Hondo College • 3600 Workman Mill Road • Whittier, CA 90601

Contents

ADMISSIONS PROCESS

- 4 Admissions Process
- 4,9 Assessment
- 5 Continuing Students
- 5 New & Returning Students
- 5 Military Students
- 5 Enrichment High School Students
- 3,9 Students with Disabilities
- 4 Orientation
- 4 Educational Plan
- 4 Registration Enrollment Steps
- 5 Registration Dates & Times
- 9 Admission and Records Office

COSTS AND FEES

- 6 Enrollment Fee
- 6 Health Services Fee
- 6 College Services Charge
- 6 Student Rep. Fee
- 6 Non-Resident Tuition
- 6 Parking Fee
- 7 Financial Aid Students
- 6 Refund Policy
- 6 Parking Permit/Refunds
- 6 To Be Eligible For A Refund
- 6 Refund Processing

REGISTRATION INFORMATION

- 8 Summer Session Dates
- 8 Open Registration
- 8 Drop for Non-Payment
- 8 Last Day to Add
- 8 Last day to Drop with a Refund
- 8 Last day to Drop with a "W"
- 8 Drop Deadline with a "W"
- 8 Pass/No Pass Petition
- 8 Graduation/Certificate Petition

FINANCIAL AID

- 7 Financial Aid at Rio Hondo College
- 7 California Dream Act
- 7 BOG Fee Waiver
- 7 State and Federal Grants
- 7 Federal Work Study
- 7 Federal Direct Loans

GENERAL INFORMATION

- 3 Alternative Formats
- 3 Disclaimer
- 3 Non-Discrimination

STUDENT SERVICES

- 9 Admissions and Records
- 9 Assessment
- 9 CalWORKs Program
- 9 Center for Career & Re-Entry Services
- 9 Counseling
- 9 Disabled Students Program and Services
- 9 EOP&S - Extended Opportunity Program and Services/CARE
- 9 Financial Aid
- 9 First Year Success Center
- 9 Guardian Scholars
- 9 Outreach and Educational Partnerships
- 9 PASS Program
- 9 Pathway to Law School
- 10 Puente Program
- 10 Student Life and Leadership
- 10 Student Affairs
- 10 Student Health and Psychological Services
- 10 Transfer Center
- 10 Veterans Service Center

CLASS LISTINGS - Summer 2016

- 14 How to Read the Schedule of Classes
- 15 - 30

DEGREES/CERTIFICATES

- 11 AA/AS Graduation Requirements
- 12 Bachelors of Science Degree
- 12 Associate of Arts for Transfer & Associate of Science for Transfer
- 12 Associate of Arts & Associate of Science Degrees
- 13 Certificates of Achievement
- 13 Career Certificates
- 13 Certificates of Skills Proficiency

RIO HONDO COLLEGE MAP

Inside Back Cover

Alternate Formats

Rio Hondo College publications are available in an alternate format upon request by persons with verifiable disabilities. Please contact Disabled Students Programs & Services at (562) 908-3420.

Disclaimer

Rio Hondo College has made every reasonable effort to ensure that the information in this class schedule accurately reflects current legislation, policies and fees. However, this information is subject to modification at any time without notice in order to accommodate changes in the resources or educational plans of the Rio Hondo Community College District, or for reasons deemed appropriate by the superintendent/president or designee. This schedule does not constitute a contract between the student and the College.

Non-Discrimination

Rio Hondo Community College District complies with all Federal and state rules and regulations and does not discriminate on the basis of national origin, religion, age, gender, gender identity, gender expression, race or ethnicity, color, medical condition, genetic information, ancestry, sexual orientation, marital status, military or veteran status, physical or mental disability, or because he or she is perceived to have one or more of the foregoing characteristics, or based on association with a person or group with one or more of these actual or perceived characteristics. This holds true for all students who are interested in participating in educational programs, including career and technical education programs, and/or extracurricular school activities. Inquiries regarding compliance and/or grievance procedures may be directed to the District's Title IX Compliance Officer/ Section 504/ADA Coordinator, Director, Student Life and Leadership, Student Union Building, 2nd Floor, Room SU-201, (562) 908-3427.

Step 4ward

Steps for success!

1 Apply – Start Rio...Go Anywhere!

To begin your journey at Rio Hondo College visit www.riohondo.edu and click the “**Apply Now**” button to begin your Rio Hondo application.



Apply Now

2 Assessment - Discover your academic skills

Assessment tests measure your academic knowledge and skills and take the guesswork out of choosing courses at the right level. You might find out that you are ready for higher-level courses in some areas, or need more preparation in other areas. Your assessment results will help you know where to begin in your college career. Schedule an appointment today at www.riohondo.edu/assessment-center/ or call (562) 463-7226. The Assessment Center is located in Learning Resource Center, room LR141.

3 Orientation - Connect with your campus

Orientation allows you to learn about financial aid, registration, tutoring services, important locations on campus, types of degrees, and more, which will help you adjust to your new college. Available through your AccessRio student portal <https://accessriopro.riohondo.edu/cp/home/displaylogin>



4 Educational Plan - Make the most of your college experience

Your EDUCATIONAL PLAN, created with the help of a counselor, is a step-by-step guide based on requirements to meet your goals and how soon you would like to complete them. Planning ahead will ensure you take your courses in the right sequence to enroll in the courses you need, when you need them. To schedule an appointment for an Educational Plan call the First Year Success Center at (562) 463-6650 or visit the Learning Resource Center, room LR 101.

Questions?

For more information and/or assistance with any of the steps above please call or visit the First Year Success Center at (562) 463-6650
Learning Resource Center, room LR 101

Registration Dates & Times

Summer 2016

To view your registration time on the MyAccessRio Portal, login, click [Student] tab, in Registration tools, click [Registration Status]. Or use the table below to find your registration time.

To locate your registration date and time find the first letter of your last name in the appropriate table based on the number of units you had completed prior to Spring 2016.

- You are a **Continuing Student** if you were enrolled in the Spring 2016 semester.
- You are a **Returning Student** if you previously attended Rio Hondo College, but were not enrolled during the Spring 2016 semester. You must submit a new, updated application before you can register.
- You are a **New Student** if you have never registered at Rio Hondo College. You must submit an application before you can register.

CONTINUING AND RETURNING STUDENTS

Continuing and returning students who have completed over 99 units are no longer eligible for priority registration. These students may register during the open registration period starting **May 5, 2016**.

Prior to April 18 continuing students with 1-99 units registered.

Continuing students with 0 units completed at RHC.

		8:00 am	11:00 am	2:00 pm	5:00 pm
Wed	April 20	P, Q, R	M, N	A, B	C, O
Thurs	April 21	D, E, F, T, U	G, W, X, Y, Z	L, S	H, I, J, K, V

Returning students with 99 or less units completed at RHC - Must submit a new updated application in order to register.

		8:00 am	11:00 am	2:00 pm	5:00 pm
Mon	April 25	P, Q, R	M, N	A, B	C, O
Tues	April 26	D, E, F, T, U	G, W, X, Y, Z	L, S	H, I, J, K, V

NEW STUDENTS

New students - must submit an application in order to register.

		8:00 am	11:00 am	2:00 pm	5:00 pm
Thurs	April 28	P, Q, R	M, N	A, B	C, O
Mon	May 2	D, E, F, T, U	G, W, X, Y, Z	L, S	H, I, J, K, V

ENRICHMENT HIGH SCHOOL STUDENTS

Enrichment high school students must submit a new application and a high school concurrent enrollment letter every semester until they graduate from high school.

Wed	May 4	All
-----	-------	-----

MILITARY

To receive Veteran benefits, including priority registration contact the Veterans Service Center in SS150.

If you are currently in the military or you are a veteran who does not wish to receive veteran benefits, you still qualify to register on the military priority registration date. Bring your military ID or your DD214 to the Admissions & Records Office to apply for priority. **The military priority registration for Summer 2016 began on March 14, 2016.** Please contact the Veteran Service Center for future registration times.

Fees & Refunds

PAYMENT OF FEES / STUDENT FINANCIAL OBLIGATIONS

Once you register for classes, you are obligated to pay your fees. **You will NOT be billed.** Students with any outstanding financial obligations to the college (e.g., library fines, laboratory fees, financial aid overpayment, returned check, registrations fees, emergency loans, etc.) will have student privileges withheld, including, but not limited to, notification of grades, sending of transcripts, and right to register. Pay your fees/financial obligations at the Admissions window or online. After you add a class, you will not be able to make changes to your schedule until your payment has been processed. If you have a debt and want to drop a class within the College's published deadlines, you must go to the Admissions counter to request the drop.

Rio Hondo College has a Drop for Non-Payment procedure. Prior to the start of each semester, there will be Common Drop Dates and students registered for classes with a substantial balance of unpaid fees will be dropped for non-payment (this includes any added, waitlisted and registered classes) and their seat will be sent to waitlisted students.

REQUIRED FEES	SUMMER
Resident Tuition	\$46.00 per unit
Non Resident Tuition	\$200.00 per unit
<i>(in addition to the \$46 per unit enrollment fee)</i>	
Student Health Fee*	\$16.00
Student Rep. Fee**	\$1.00
College Service Fee***	\$4.00

SEMESTER PARKING FEES SUMMER

Automobile	\$20.00
Motorcycle	\$5.50
Daily Parking Permit	\$3.00
Metered Parking	\$0.25/15 min.

**Students who document religious reasons may be exempted from the Student Health Fee. A full refund will be made only if requested in writing prior to the semester refund deadline.*

***This fee supports student representation at city, county, and district government meetings. Students may refuse to pay this fee on religious, political or moral grounds by submitting a refusal in writing to the Student Activities Office prior to registration.*

****This fee supports student scholarships, student activities and various campus projects. Fee is automatically charged unless a waiver of the fee is approved and submitted prior to registration. Waivers are available in the Admissions & Records Office and Student Activities Office.*

ENROLLMENT FEE REFUNDS

Enrollment fee refunds are automatic; no refund form submission required. You will be eligible for a refund if: a) you have dropped class(es) by the refund deadline; b) class(es) are cancelled by the College. Last day to drop for a refund deadlines vary according to classes begin and end dates each semester. Please see Important Dates and Deadlines.

Any enrollment fee refund request is subject to a once-semester charge of \$10.00. Refund checks will be issued and mailed to the address on record. You will receive a refund check in the mail approximately 45 business days after the last day for refund date.

PARKING PERMIT REFUND

Refunds will only be given for permits that are returned by the RHC FULL TERM last day to drop for a refund date on June 10, 2016. Please see Important Dates and Deadlines on page 8. Only RHC students are eligible for semester parking permit refunds. Non-Credit Fee based students are NOT eligible for semester parking permit refunds.

If you purchased the permit online via AccessRio, return the permit in person to the RHC Parking Services by the RHC PRIMARY FULL TERM last day to drop for a refund on June 10, 2016. The full cost of the permit will be refunded to the credit card used for the purchase. The handling fee is not refunded.

If you purchased the permit at RHC, return the permit in person to the RHC Cashier or Admissions windows by the RHC FULL TERM last day to drop for a refund on June 10, 2016. The full cost of the permit will be applied to your account. Any refund will be subject to the Fees Refund policy above.

Apply – Start Rio...Go Anywhere!

To begin your journey at Rio Hondo College visit www.riohondo.edu and click the **“Apply Now”** button to begin your Rio Hondo application.



Apply Now

Financial Aid

FUNDING YOUR COLLEGE EDUCATION

Most students are eligible for some type of financial aid, so apply. You may be eligible for free tuition and other types of financial aid.

Applying for Financial Aid is as easy as 1, 2 and 3

1. Apply for your Federal Student Aid ID at <https://fsaid.ed.gov> – this is so you can sign your application electronically for faster processing.
2. Submit your Free Application for Federal Student Aid (FAFSA) application online at www.fafsa.ed.gov
 - AB540 students must complete the California Dream Act application instead of the FAFSA. The California Dream Act application is available on-line at www.csac.ca.gov.
 - Students who need financial aid for only Summer 2016 must complete the 15-16 FAFSA.
 - Students who need financial aid for Summer 2016, Fall 2016 and Spring 2017, must complete both the 15-16 and 16-17 FAFSA.
3. Check your Access Rio Portal for any additional required documents and to find out how much financial aid you are eligible to receive.

TYPE OF FINANCIAL AID:

Board of Governor's (BOG) Fee Waiver

The BOG Fee Waiver waives enrollment and health services fees. Completing your FAFSA or California Dream Act application determines eligibility for the BOG Fee Waiver.

State and Federal Grants

Grants are need- based financial aid and do not have to be repaid. Eligibility is determined by completing the Free Application for Federal Student Aid (FAFSA) or California Dream Act Application. The priority deadline for submitting the FAFSA is March 2nd. FAFSA applications can be submitted after March 2nd, but some grants may no longer be available. California Dream Act applications must be submitted by March 2nd to be considered for State grants.

Federal Work Study

Completing the FAFSA will determine your eligibility for Federal Work Study, if you indicate on your FAFSA that you are interested in work study. Students

awarded Federal Work Study may work up to 20 hours per week. Federal Work Study job opportunities are posted on the Financial Aid Office's website.

Federal Direct Loans

Federal Direct Loans must be repaid with interest and should only be considered when other sources of financial aid are unavailable or insufficient. Students must complete a FAFSA before applying for a Federal Direct Loan. Students must meet Satisfactory Academic Progress to be eligible for any financial aid.

The Financial Aid Office is located in the Student Services Building, SS130. Phone: 562-463-3370

Regular Office Hours:

Monday-Thursday
8:00 am – 7:00 pm

Friday, 8:00 am – 2:00 pm

Join Rio Hondo College's SOCIAL MEDIA NETWORK Connect with Rio!

-  RHCRoadrunners
-  RioHondoCollege
-  RioHondo_College
-  bit.do/riohondocollege
-  #iLoveRioHondo

Summer 2016 Important Dates

Please note that many classes are offered in other date ranges and have different drop dates unique to each class. It is recommended that students refer to the class schedule to verify the drop date for each specific class they are enrolled in.

Full term	June 6 - August 12, 2016
First half dates	June 6 - July 8, 2016
Second half dates	July 11 - August 12, 2016
Summer 6 Week dates	June 20 - July 29, 2016
Summer 8 Week dates	June 20 - August 12, 2016

Registration began for continuing students **March 14, 2016**

Open registration	May 5 - June 5, 2016
Drop for Non-Payment #1	May 17, 2016; 11 p.m.
Drop for Non-Payment#2	May 31, 2016, 11 p.m.

Last day to add with an add code	Deadline
Full term courses (6/6/16 - 8/12/16)	June 10, 2016
First half (5 week courses: 6/6/16 - 7/8/16)	June 7, 2016
Second half (5 week courses: 7/11/16 - 8/12/16)	July 13, 2016
Summer 6 week courses (6/20/16 - 7/29/16)	June 22, 2016
Summer 8 week courses (6/20/16 - 8/12/16)	June 23, 2016

Last day to drop with a refund	Deadline
Full term courses (6/6/16 - 8/12/16)	June 10, 2016
First half (5 week courses: 6/6/16 - 7/8/16)	June 7, 2016
Second half (5 week courses: 7/11/16 - 8/12/16)	July 13, 2016
Summer 6 week courses (6/20/16 - 7/29/16)	June 22, 2016
Summer 8 week courses (6/20/16 - 8/12/16)	June 23, 2016

Last day to drop without a "W" on record	Deadline
Full term courses (6/6/16 - 8/12/16)	June 16, 2016
First half (5 week courses: 6/6/16 - 7/8/16)	June 9, 2016
Second half (5 week courses: 7/11/16 - 8/12/16)	July 14, 2016
Summer 6 week courses (6/20/16 - 7/29/16)	June 26, 2016
Summer 8 week courses (6/20/16 - 8/12/16)	June 28, 2016

Drop deadline (with a "W" on record)	Deadline
Full term courses (6/6/16 - 8/12/16)	July 15, 2016
First half (5 week courses: 6/6/16 - 7/8/16)	June 23, 2016
Second half (5 week courses: 7/11/16 - 8/12/16)	July 29, 2016
Summer 6 week courses (6/20/16 - 7/29/16)	July 13, 2016
Summer 8 week courses (6/20/16 - 8/12/16)	July 21, 2016

Pass/No Pass petition due	Deadline
Full term courses (6/6/16 - 8/12/16)	June 24, 2016
First half (5 week courses: 6/6/16 - 7/8/16)	June 14, 2016
Second half (5 week courses: 7/11/16 - 8/12/16)	July 20, 2016
Summer 6 week courses (6/20/16 - 7/29/16)	June 30, 2016
Summer 8 week courses (6/20/16 - 8/12/16)	July 6, 2016

Graduation/Certificate petition deadline July 15, 2016

Holidays - College closed

Independence Day - July 4, 2016

Student Services Programs

Admissions and Records (Room SS120)

The Admissions and Records Office is the first point of contact for all students entering Rio Hondo College. This office is responsible for all items, from application to graduation pertaining to a student's academic record. This includes: applications; residency issues; registration; enrollment and degree verifications; transcripts; evaluation of external transcripts; grades from faculty; drops from students and faculty; course repetitions; pass/no pass grading option; graduation and certificate petitions; International Student applications; and issues student ID cards, parking permits and tap cards. In addition, we also ensure that Rio Hondo College is abiding by Title 5 and Education Code Standards. All students' records are also maintained in accordance with the federal Family Educational Rights and Privacy Act (FERPA). (562) 908-3415

Assessment (Room LR141)

By taking the Assessment test the college can help you to identify the appropriate English, reading, and math class placement level to enhance your success in college. The test is a basic skill class placement test, not a pass or fail test. The scores of these tests will be used to help place you in appropriate classes. There is also an English-as-a-second language (ESL) version of the test for students whose primary language is not English. (562) 463-7226

CalWORKs Program (Room SS220)

California Work Opportunity and Responsibility for Kids (CalWORKs) is the State of California's welfare-to-work program for families and children. The purpose of the CalWORKs program at Rio Hondo College is to provide students who are receiving cash aid/ temporary aid for needy families (TANF) with education, training, and employment skills to become successfully employed. The CalWORKs program provides priority registration, academic, career and personal counseling, case management, computer lab, Work-Study and Employment Assistance, workshops on employment/Life skills, student advocacy, information and assistance about GAIN (Greater Avenue for Independence) requirements, and on and off campus resources. (562) 463-7311

Center for Career & Re-entry Services (Room SS350)

The Center for Career & Re-entry Services provides career-life planning programs, internships and job placement information. It helps students clarify life and educational goals, choose a major, decide on a career goal, and improve career decision-making skills. The services in the center include career related workshops, career counseling, and career

interest testing and interpretation. Internet research and a career library are also available to students in the Center for Career & Re-entry Services. (562) 908-3407

Counseling (Room SS160)

Assists students with their academic and career goals by offering counseling classes, orientations, assistance with educational plans, choosing a major, graduation requirements and transfer requirements. Our counselors are dedicated professionals who are more than willing to address concerns either online or on-campus. Students who regularly meet with a counselor are far more successful in college than those who do not. (562) 908-3410

Disabled Students Program & Services (Room SS330)

DSP&S offers support services for students who have disabilities. Resource rooms and specialized staff are available to assist students who have Americans with Disabilities Act (ADA) verifiable disabilities. Program components include services for people who have learning disabilities or who are physically, psychologically, visually or hearing impaired. The program also serves individuals who have acquired brain injuries, developmental delays and other types of disabilities that cause educational limitations requiring academic accommodations. (562) 908-3420

Extended Opportunity Program and Services/CARE (Room SS240)

The Extended Opportunities Programs & Services (EOP&S) encourages the enrollment, retention and transfer of students, handicapped by language, social, economic and educational disadvantages, and to facilitate the successful completion of their educational goals and objectives. EOP&S offers academic and support counseling, financial aid and other support services that go "over and above" the traditional services offered at Rio Hondo College. Cooperative Agencies Resources for Education (CARE) is a supplemental component of EOP&S that specifically assists single-parent students, who are receiving county cash-aid by offering additional supportive services so they are able to become self-sufficient. (562) 908-3423

Financial Aid (Room SS130)

The Financial Aid Office is committed to assisting students access financial aid resources for higher education. All students are strongly encouraged to apply for financial aid, even if they believe they may not qualify. Types of financial aid available include fee waivers, grants, student loans and work-study. (562) 908-3411

First Year Success Center (Room LR101)

The First Year Success Center is a place to enhance the academic success of all first year students at Rio Hondo College through a network of student support services. Students meet with a counselor to develop an Educational Plan and receive assistance with AccessRIO navigation, registering for classes and applying for Financial Aid. (562) 463-6650

Guardian Scholars (Room SS307)

The Guardian Scholars Program is a comprehensive student support program that serves current and former foster youth pursuing higher education. The Guardian Scholars Program at Rio Hondo College is dedicated to providing services and support that meet the personal and academic needs of our students in successfully transitioning into adulthood, obtaining a degree/certificate and/or transferring to a four-year university. (562) 463-7472

Outreach and Educational Partnerships (Room SU206)

Outreach and Educational Partnerships programs provide prospective students with detailed information regarding postsecondary options and academic and student services programs that are offered at the College. Services provided include middle and high school presentations, campus tours, college prep workshops, parent/community outreach, applications assistance, assessment information and AccessRIO support. (562) 463-4693

PASS Program (Room SS140)

The PASS (Personal Academic Support Services) Program is a federally funded TRIO student success and support program designed to assist first-generation, low-income and/or disabled students to achieve college graduation/transfer by providing free tutoring, academic advising, economic stipend assistance, university transfer information, college visitations and cultural activities. (562) 463-3216

Pathway to Law School (Room A203)

The Pathway to Law School program is for underrepresented first-generation college students interested in learning more about careers in the legal field and going to law school. The initiative is designed to enhance opportunities and advancement in the legal profession for diverse populations. Ideally, students will spend two years at Rio Hondo College then transfer to any accredited undergraduate institution to complete their bachelor's degree and then be considered for a priority admissions review to the six participating law schools. (562) 463-7008

Student Services Programs, continued

Puente Program (Room SS240)

The Puente program is a collaboration between the departments of Counseling and Communications and is designed to enhance student completion of transfer English and increase student transfer to four-year colleges and universities. Students participate in special counseling, receive unique instruction and are assigned to work with a personal mentor. (562) 463-3207

Student Life and Leadership (Room SU201)

The Student Life & Leadership department develops students holistically by providing quality co-curricular programming through campus-wide collaborations. Students are developing socially, emotionally, and academically with programming and services that are driven by our four Guiding Values: Student Success & Degree Completion, Cultural Diversity, Social Responsibility, and Leadership Development. We offer a variety of engagement opportunities including, but not limited to, the Associated Students of Rio Hondo College (ASRHC), Inter Club Council (ICC), Student Ambassador Program, and Student Leadership Institute (SLI). We are located on the 2nd floor of the Student Union. (562) 908-3427

Student Affairs (Room SS204)

Student Affairs is responsible for handling student conduct and discipline, student grievances, compliance issues, and complaints of discrimination and harassment. (562) 908-3498

Student Health and Psychological Services (Room SS230)

College students receive a variety of health services from the college supported by the health fee. Most services are free and some have a minimal charge. **Psychological Services** is committed to supporting student academic success and personal development. A full-time clinical psychologist and 3-4 psychology graduate interns are available for students who would like help with personal problems. We offer short-term counseling for students who are struggling with issues such as family and social relationships, romantic relationships, life transitions, sexuality, grief, stress, trauma, anxiety, or depression. Some of the other services are: Crisis Intervention, Outreach and Presentations, Faculty & Staff Consultations, Group Counseling. All services are confidential and free to enrolled students. Appointments are recommended. (562) 908-3438

Transfer Center (Room SS250)

The Transfer Center assists students to identify 4-year universities they are interested in attending and help them make a smooth transition to that college or university. Some of the center's specific functions include transfer information workshops, annual transfer information days, college/university fairs, university tours, application workshops, sponsoring regular Rio Hondo College visits from university and four-year college representatives, and going to college classrooms to discuss with students transfer services and options available to them. (562) 463-4619

Veterans Service Center (Room SS150)

The Veterans Service Center (VSC) acts as a liaison between veteran students (or dependents) and the Department of Veterans Affairs. The VSC assists with forms, claims processing and to ensure that VA regulations are complied with for educational benefits. The VSC is also an informational center to assist you with any questions you may have regarding your veterans educational benefits at Rio Hondo College. (562) 463-3370

From Rio to Cal State Start Your Path This Summer!

The Associate Degree for Transfer (AA-T or AS-T) is a special, new degree offered at California Community Colleges. To pursue this special degree rather than a traditional AA or AS degree, you should meet with a counselor to develop an education plan that puts you on the path toward the AA-T or AS-T degree.

The guarantee means that students who earn an AA-T or AS-T degree and meet the CSU minimum eligibility requirements are guaranteed admission to a CSU, but not necessarily to a particular campus or major. With the special degree, you may be given a GPA bump when applying to an impacted campus outside your local area or an impacted major that is deemed similar.

Once at the CSU, if you are admitted and enrolled in a designated similar degree program you have the opportunity to complete your bachelor's degree with as little as 60 semester units or 90 quarter units of coursework. A counselor will help you determine which CSUs offer bachelor's degrees that correspond to your AA-T or AS-T degree.

Associate in Science Degree for Transfer (AS-T) in:

- Administration of Justice
- Business Administration
- Early Childhood Education
- Mathematics
- Physics

Associate in Arts Degree for Transfer (AA-T) in:

- Anthropology
- Art History
- Communication Studies
- Economics
- Elementary Teacher Educ.
- English
- History
- Journalism
- Kinesiology
- Philosophy
- Political Science
- Psychology
- Sociology
- Spanish
- Studio Arts
- Theatre Arts



Associate Degree for Transfer

A Degree with a Guarantee.™



See a counselor for more details.

Graduation Requirements

Associate of Arts Degree or Associate of Science Degree General Education Requirements

The following general education requirements for an Associate of Arts or Associate of Science degree must be completed and are part of the 60 units required for the degree.

1. Competence in reading and written expression may be met by the following:

- a. The reading requirement may be met by one of the following:
 - i. An appropriate score on the Reading Placement Test
 - ii. Credit ("P" grade) earned in READ 023
 - iii. 2 or 4 year degree from a regionally accredited institution
- b. The written expression requirement may be met by one of the following:
 - i. Credit earned in ENGL 101 with a grade of "C" or better
 - ii. A satisfactory score on the CSU English Equivalency Exam (to be determined by the Division of Communications and Languages)
 - iii. Students earning a "C" or better in freshman composition courses (3 or more semester/4 or more quarter units) from regionally accredited U.S. colleges and universities.
 - iv. Advanced Placement examination scores of 3, 4, or 5 on either of the following exams: AP English Language & Composition or English Literature & Composition.
 - v. CLEP examination scores of 50 or higher on one of the following exams: College Comp, College Comp Modular, English Comp (if taken prior to July '10).

2. Competence in mathematics may be met by one of the following:

- a. Credit ("C" grade or better) in MATH 060 (Geometry), MATH 070 (Intermediate Algebra) or MATH 072 (The Mathematics of Money), MATH 073 (Fast-Track Intermediate Algebra) or a higher level math course
- b. Demonstrate proficiency by a satisfactory score on the Rio Hondo College Math Proficiency Exam
- c. Advanced Placement examination scores of 3, 4 or 5 on either of the following exams: AP Calculus AB or AP Calculus BC or AP Statistics.
- d. CLEP examination scores of 50 or higher on one of the following exams: Calculus, College Algebra, College Algebra-Trig, and Trigonometry

3. Physical Education-Minimum 2 classes.

Any two physical education or dance activity courses. Students who have completed a Fire, Police, Wildland Fire, or Corrections Academy from an accredited institution are automatically waived from this requirement. Students with honorable discharge DD214 paperwork will be awarded two 1-unit PE activity courses. (Exemption may be granted to those students physically unable to complete this requirement. Exemption forms are available in the Health Office.)

4. American Institutions Requirement*- Minimum of one course:

HIST 143, 143H, 144, 144H, 158, 159, 159H, 170
POLS 110 or 110H

5. Natural Sciences with Lab (a lab must be included)- Minimum 3 units:

ANTH 101, 101H, & 101L
ASTR 110, 110H & 112 or 114
BIOL 101, 111 & 111L, 112, 120 & 120L
CHEM 101 & 101L, 110, 120, 130
GEOG 101 & 101L
GEOL 150 & 151
PHY 120, 150, 160, 211, 212, 213
PHYS 101, 102

6. Social and Behavioral Sciences - Minimum 3 units:

ANTH 102, 103, 110, 115, 125
CD 106, 208
CHST 101, 146, 148, 150
ECON 101, 101H, 102, 102H, 106, 135
GEOG 102, 103
HIST 101, 102, 122, 143, 143H, 144, 144H, 158, 159, 159H, 167, 170
HUM 130
PHIL 128
POLS 110, 110H, 125, 128, 130, 135, 140, 150
PSY 101, 101H, 112, 114, 116
SOC 101, 101H, 102, 105, 110, 114, 116, 120, 127, 148

7. Humanities

- A. Fine Arts – Minimum 3 units:
ART 101, 104, 105, 105H, 106, 106H, 107, 108, 109, 110, 112, 113, 115, 120, 130, 135, 140, 179
DANC 179, 199
MUS 101, 129, 130, 131, 132, 133, 135, 136
PHTO 190
THTR 101, 105, 105H, 110

B. Humanities – Minimum 3 units:

ASL 149
CHIN 101, 102
CHST 146
ENGL 126, 131
FR 101, 102, 201, 202
HIST 101, 102, 122, 131, 143, 143H, 144, 144H, 158, 159, 159H, 167, 170
HUM 110, 111, 125, 125H,
ITAL 101, 102
JAPN 101, 102
LATN 101, 102
LIT 102, 102H, 112A, 112AH, 112B, 112BH, 114, 114H, 117, 117H, 130, 130H, 140, 140H, 141, 142, 142H, 144A, 144B, 145, 145H, 146A, 146AH, 146B, 146BH, 147, 148, 149
MSCM 128
PHIL 101, 101H, 120, 124, 126, 135, 140
SPAN 101, 102, 130, 131, 201, 201H, 202
SPCH 130, 132

8. Language and Rationality

- A. English Composition–Minimum 3 units:
ENGL 101
- B. Communication and Analytical Thinking – Minimum 3 units:
CIT 101, 115, 120
ENGL 125, 201, 201H
LIB 101
MATH 120, 130, 130H, 140, 160, 170, 175, 180, 190, 190H, 191, 250, 260, 270
PHIL 110, 112
PSY 190
SPCH 100, 101, 101H, 102, 140
READ 101
VOCB 101

**Any course taken to meet the American Institutions requirement may not be used to meet another general education requirement. Courses may be used to fulfill only one G.E. area.*

(It is the student's responsibility to provide verification to the Admissions and Records Office if any of the above requirements are met at another college or university.)

2015-16 College Catalog

Associate Degree for Transfer requirements can be found online at:
<http://www.riohondo.edu/transfer-center/associate-degree-for-transfer/>

California State University requirements can be found online at:
<http://www.riohondo.edu/counseling-center/general-education/>

CSU/UC IGETC requirements can be found online at:
<http://www.riohondo.edu/counseling-center/general-education/>

Degrees

Bachelor of Science Degree

Career & Technical Education

- Automotive Technology



Associate in Science Degree for Transfer (AS-T)

- Administration of Justice
- Business Administration
- Early Childhood Education
- Mathematics
- Physics

Associate in Arts Degree for Transfer (AA-T)

- Anthropology
- Art History
- Communication Studies
- Economics
- Elementary Teacher Education
- English
- History
- Journalism
- Kinesiology
- Philosophy
- Political Science
- Psychology
- Sociology
- Spanish
- Studio Arts
- Theatre Arts

Associate of Arts & Associate of Science Degrees

Arts & Cultural Programs

- Animation
- Art
- Commercial Art
- Music
- Photography
- Theatre Arts

Behavioral & Social Sciences

- Chicano Studies
- Child Development
- Drug Studies
- Social Work
- Philosophy

Business

- Accounting
- Business Administration
- Business Marketing
- Computer Information Technology: Computer Systems
- Computer Information Technology: Microcomputer Specialist
- International Business
- Logistics Management
- Management and Supervision
- Small Business / Entrepreneurialism

Career & Technical Education

- Advanced Engine Performance
- Alternative Energy Technology
- Alternative Fuels/Advanced Transportation Technology
- Architecture
- Architectural Design & Drawing
- Automotive Collision Repair & Painting

- Automotive Technology
- Civil Design Technology
- Electronics Technology
- Engineering Design & Drafting
- Heavy Equipment Technology
- Honda Professional Career Training Program Specialization (PACT)
- Welding Technology

Communications & Languages

- English and Literature
- Mass Communications: Mass Media
- Mass Communications: Print Media

Health Science & Nursing

- Nursing (ADN)
- Nursing (LVN to ADN)
- Nursing (Psy Tech to RN)

Kinesiology, Dance, and Athletics

- Dance

Mathematics & Sciences

- Biology
- Environmental Science
- Environmental Technology
- Public Safety
- Administration of Justice
- Corrections
- Fire Technology
- Wildland Fire Technology

General Studies

- Emphasis in Arts and Human Expression
- Emphasis in Social Behavior and Self-Development
- Emphasis in Social Sciences
- Emphasis in Science and Mathematics



Certificates

Certificates of Achievement

Behavioral & Social Sciences

- Child Development
- Drug Studies
- Preschool Teacher

Business

- Accounting
- Business Marketing
- Computer Information Technology: Computer Systems
- Computer Information Technology: Microcomputer Specialist
- International Business
- Logistics Management
- Management and Supervision
- Retail Management
- Small Business/ Entrepreneurialism

Career & Technical Education

- Advanced Engine Performance
- Advanced Engine Performance-Technician
- Alternative Energy Technology
- Alternative Fuels & Advanced Transportation Technology
- Architectural Design & Drawing – Technician
- Automotive Collision Repair & Painting
- Break and Suspension Service
- Civil Design & Drawing
- Civil Design Technology
- Diesel Fuel & Emission Systems
- Electronics Technology
- Engine Repair

- Engineering Design Drafting – Technician
- Fuel Injection Systems
- General Automotive Service
- General Service Technician
- Geographic Information Systems
- Heavy Equipment Service Technician – Specialist
- Honda/Acura Air Conditioning and Supplemental Restraint Systems
- Honda/Acura Brakes, Suspension, and Electronic Systems
- Honda/Acura Engine Repair and Chassis Electrical Systems
- Honda/Acura Power Train and Transmission Systems
- Safety, Comfort and Convenience Systems
- Surveying, Mapping & Drawing
- Transmission Service
- Welding Technology

Communications & Languages

- Mass Communications: Mass Media
- Mass Communications: Print Media

Mathematics & Sciences

- Environmental Technology

Health Science & Nursing

- Vocational Nursing

Kinesiology, Dance, and Athletics

- Fitness Specialist

Public Safety

- Fire Technology
- Wildland Fire Technology

Career Certificate

Business

- Accounting for Government & Non-profit Organizations
- Repair Technician
- Entry Network Technician
- Desktop Technician
- Network Technician

Health Science & Nursing

- Certified Nurse Assistant Acute Care
- Home Health Aide
- Nurse Assistant Pre-Certification Training Course

Kinesiology, Dance, and Athletics

- Athletic Trainer's Aide

Public Safety

- Basic Police Training

Certificate of Skill Proficiency

Business

- Computerized Accounting
- Income Tax Preparer

Behavioral & Social Sciences

- Human Services

Public Safety

- Emergency Medical Technician

Arts and Cultural Programs

- Game Development





PATHWAY TO LAW SCHOOL



HAVE YOU EVER THOUGHT OF GOING TO LAW SCHOOL?

Rio Hondo College's Pathway to Law School is for YOU!

Pathway to Law School is for underrepresented and first-generation Rio Hondo College students interested in learning more about careers in the legal field and going to law school. The program is sponsored by the Council on Access and Fairness of the State Bar of California.

PROGRAM BENEFITS

- Individual counseling and mentoring
- Exposure to different careers in law
- Networking and learning opportunities
- Membership in the Rio Hondo College Pre-Law Society
- Priority Admission Review to participating law schools:
 - University of Southern California
 - Loyola Marymount University
 - University of California, Irvine
 - University of California, Davis
 - University of San Francisco
 - Santa Clara University



✦ FOR MORE INFORMATION ✦
 Website: www.riohondo.edu/law-school
 Email: lawschool@riohondo.edu
 Telephone: (562) 463-7008

Summer 2016 Schedule of Classes

HOW TO READ THE SCHEDULE OF CLASSES

SUBJECT CODE
 ↓
MATH 160
 COURSE NUMBER
 ↘
College Algebra
 COURSE TITLE
 ↙
 PREREQUISITE REQUIREMENTS

OFF-CAMPUS LOCATIONS

- **El Monte Educational Center**
3017 Tyler Ave. El Monte, CA 91731
- **South Whittier Educational Center**
14307 E. Telegraph Rd., Whittier, CA 90604

4 Units

*Prerequisite: MATH 070 or MATH 070D or MATH 073 with a grade of "C" or better or appropriate assessment.
 Advisory: ENGL 035 or ENLA 100 or appropriate assessment; READ 023 or appropriate assessment*

TRANSFER DESIGNATION → *Transfers to: UC (credit limit *), CSU (*Students will receive credit from UC for only one of the following courses: MATH 160 or MATH 165 or MATH 180)*

50401	CLAS	6/20/16 - 7/29/16	MTWR	1800 - 2050	Jesus Gutierrez	S200
51772	WEB	6/6/16 - 8/12/16			Mark Littrell	
↑	↑	↑	↑	↑	↑	↑
CRN NUMBER	COURSE TYPE	COURSE DATES	DAYS R=THURSDAY	TIMES	INSTRUCTOR	ROOM

SCHEDULE OF CLASSES – Summer 2016

CLASS SCHEDULE INFORMATION IS SUBJECT TO CHANGE -

CHECK THE RHC WEB SITE OFTEN FOR UPDATES TO PREVIOUSLY PUBLISHED SCHEDULE INFORMATION. WWW.RIOHONDO.EDU

ACCOUNTING

Division of Business

ACCT 090
Introduction to Accounting **3 Units**
Advisory: READ 023 or appropriate assessment; MATH 030 or MATH 030D or MATH 033 or appropriate assessment; MGMT 052
 51725 CLAS 6/20/16 - 8/12/16 MW 0800 - 1120 Johnnie Atkins B119

ACCT 101
Financial Accounting **4 Units**
Advisory: READ 023 or appropriate assessment; MATH 050 or MATH 050D or MATH 053 or appropriate assessment; ACCT 090; MGMT 052
Transfers to: UC, CSU
 50121 CLAS 6/20/16 - 8/12/16 MTWR 1105 - 1315 Steven Valdes B118
 51508 WEB 6/20/16 - 8/12/16 Jeannie Liu
 51531 WEB 6/20/16 - 8/12/16 Janet Cha

ACCT 102
Managerial Accounting **4 Units**
Prerequisite: ACCT 101 with a grade of "C" or better
Advisory: READ 023 or appropriate assessment; MATH 050 or MATH 050D or MATH 053 or appropriate assessment
Transfers to: UC, CSU
 50210 WEB 6/20/16 - 8/12/16 Jeannie Liu

ADMINISTRATION OF JUSTICE

Division of Public Safety

AJ 101
Introduction to Administration of Justice **3 Units**
Advisory: ENGL 035 or ENLA 100 or appropriate assessment; READ 023 or appropriate assessment
Transfers to: UC, CSU
 50183 CLAS 6/20/16 - 7/29/16 TWR 1100 - 1350 James Newman AJ 322
 51152 WEB 6/6/16 - 7/8/16 James Bland

AJ 102
Criminal Procedures **3 Units**
Advisory: ENGL 035 or ENLA 100 or appropriate assessment; READ 023 or appropriate assessment
Transfers to: CSU
 50191 CLAS 6/20/16 - 7/29/16 TWR 0800 - 1050 Terril Dochnahl AJ321
 51172 WEB 6/6/16 - 7/8/16 Jedediah Dineen

AJ 104
Legal Aspects of Evidence **3 Units**
Advisory: ENGL 035 or ENLA 100 or appropriate assessment; READ 023 or appropriate assessment; AJ 101
Transfers to: CSU
 50201 CLAS 6/20/16 - 7/29/16 TWR 1400 - 1640 Judith Haggerty AJ323
 51174 WEB 6/6/16 - 7/8/16 Carley Mitchell

AJ 105
Community Relations/Multicultural Issues Within Public Service **3 Units**
Advisory: ENGL 035 or ENLA 100 or appropriate assessment; READ 023 or appropriate assessment; AJ 101
Transfers to: UC, CSU
 50221 CLAS 6/20/16 - 7/29/16 TWR 1100 - 1350 Dan Petropulos AJ321
 51175 WEB 6/6/16 - 7/8/16 James Newman

AJ 106
Criminal Law I **3 Units**
Prerequisite: AJ 101 with a grade of "C" or better, or completion of PAC 040 or equivalent
Advisory: ENGL 035 or ENLA 100 or appropriate assessment; READ 023 or appropriate assessment
Transfers to: UC (credit limit), CSU (*Students will receive credit from UC for only one of the following courses: AJ 106 or AJ 107)*
 51176 WEB 6/6/16 - 7/8/16 George Kimber

AJ 107
Criminal Law II **3 Units**
Prerequisite: AJ 101 with a grade of "C" or better, or completion of PAC 040 or equivalent
Advisory: ENGL 035 or ENLA 100 or appropriate assessment; READ 023 or appropriate assessment
Transfers to: UC (credit limit), CSU (*Students will receive credit from UC for only one of the following courses: AJ 106 or AJ 107)*
 51177 WEB 6/6/16 - 7/8/16 Carley Mitchell

AJ 275
Introduction to Forensic Science **3 Units**
Advisory: ENGL 035 or ENLA 100 or appropriate assessment; READ 023 or appropriate assessment
Transfers to: CSU
 50240 CLAS 6/20/16 - 7/29/16 TWR 0800 - 1050 James Newman AJ 322

ALTERNATIVE ENERGY TECHNOLOGY

Division of Career & Technical Education

AET 120
Introduction to Alternative Energy Technology (Same as ET 120) **3 Units**
Advisory: ENGL 035 or ENLA 100 or appropriate assessment; READ 023 or appropriate assessment; MATH 030 or MATH 030D or MATH 033 or appropriate assessment
Transfers to: CSU
 51818 CLAS 6/20/16 - 7/29/16 TWR 1800 - 2015 To Be Assigned T101
 LAB 6/20/16 - 7/29/16 TWR 2020 - 2135 To Be Assigned T101

AET 121
Photovoltaic Systems Design and Installation (Same as ET 121) **3 Units**
Advisory: ENGL 035 or ENLA 100 or appropriate assessment; READ 023 or appropriate assessment; MATH 030 or MATH 030D or MATH 033 or appropriate assessment
Transfers to: CSU
 51790 CLAS 6/20/16 - 7/29/16 TWR 0900 - 1115 David Lindy T101
 LAB 6/20/16 - 7/29/16 TWR 1120 - 1235 David Lindy T101

AMERICAN SIGN LANGUAGE

Division of Communication & Languages

ASL 149
American Sign Language I **4 Units**
Advisory: ENGL 030 or ENLA 034 or appropriate assessment; READ 022 or appropriate assessment
Transfers to: UC, CSU
 50718 CLAS 6/20/16 - 7/29/16 MTWR 1800 - 2100 William Rennie A206

ANIMATION

Division of Arts & Culture Programs

ANIM 105
Principles of Animation **3 Units**
Advisory: ENGL 035 or ENLA 100 or appropriate assessment; ART 130; ART 230
Transfers to: CSU
 51834 CLAS 7/11/16 - 8/12/16 MTWR 1000 - 1130 David Dawson LR104
 LAB 7/11/16 - 8/12/16 MTWR 1140 - 1500 David Dawson LR104

ANTHROPOLOGY

Division of Behavioral & Social Sciences

ANTH 101
Introduction to Physical Anthropology **3 Units**
Prerequisite: ENGL 030 or ENLA 034 or appropriate assessment; READ 021 or appropriate assessment; MATH 020 or MATH 020C or appropriate assessment
Transfers to: UC (credit limit), CSU (*Students will receive credit from UC for only one of the following courses: ANTH 101 or ANTH 101H)*
 50001 CLAS 6/20/16 - 7/29/16 MW 1800 - 2215 David Perez S334
 51020 CLAS 6/6/16 - 7/8/16 MTWR 1045 - 1310 Santiago Garcia S334
 51021 WEB 6/20/16 - 8/12/16 Adam Wetsman
 51022 WEB 6/20/16 - 8/12/16 Adam Wetsman
 51836 CLAS 6/6/16 - 7/14/16 MTWR 1053 - 1305 Vincent De Setto Pioneer High School

CRN	TYPE	DATES	DAYS/TIME	INSTRUCTOR	ROOM
ANTH 101L Physical Anthropology Lab 1 Unit					
<i>Prerequisite/Corequisite: ANTH 101 or ANTH 101H</i>					
<i>Advisory: ENGL 035 or ENLA 100 or appropriate assessment; READ 023 or appropriate assessment</i>					
<i>Transfers to: UC, CSU</i>					
51023	LAB	6/6/16 - 7/8/16	MTWR 0800 - 1025	Billy Wong	S230
ANTH 102 Introduction to Cultural Anthropology 3 Units					
<i>Advisory: ENGL 035 or ENLA 100 or appropriate assessment; READ 023 or appropriate assessment</i>					
<i>Transfers to: UC, CSU</i>					
51024	CLAS	7/11/16 - 8/12/16	MTWR 0800 - 1025	Jaclyn Maggnetti	S334
51025	WEB	6/20/16 - 8/12/16		Adam Wetsman	

ANTH 103 Introduction to Archaeology 3 Units					
<i>Advisory: ENGL 035 or ENLA 100 or appropriate assessment; READ 023 or appropriate assessment</i>					
<i>Transfers to: UC, CSU</i>					
51846	WEB	6/20/16 - 8/12/16		Jill Pfeiffer	

ANTH 125 Religion, Magic, Witchcraft, and the Supernatural 3 Units					
<i>Advisory: ENGL 035 or ENLA 100 or appropriate assessment; READ 023 or appropriate assessment</i>					
<i>Transfers to: UC, CSU</i>					
51026	WEB	6/20/16 - 8/12/16		Jill Pfeiffer	

ARCHITECTURE

Division of Career & Technical Education

ARCH 095 Construction Document Reading and Estimating 3 Units					
<i>Advisory: ENGL 030 or ENLA 034 or appropriate assessment; READ 023 or appropriate assessment; MATH 020 or MATH 020C or appropriate assessment</i>					
51678	CLAS	6/20/16 - 7/29/16	TWR 0800 - 1015	Edward Rickter	S306
51678	LAB	6/20/16 - 7/29/16	TWR 1025 - 1140	Edward Rickter	S306

ARCH 235 Architectural Design Studio 4 Units					
<i>Prerequisite: ARCH 215</i>					
<i>Advisory: ENGL 030 or ENLA 034 or appropriate assessment; READ 023 or appropriate assessment; ENGT 150</i>					
<i>Transfers to: UC, CSU</i>					
51755	CLAS	6/20/16 - 7/29/16	TWR 0800 - 1050	Maurice Herman	S310
	LAB	6/20/16 - 7/29/16	TWR 1100 - 1350	Maurice Herman	S310

ARCH 236 Architecture Design Studio II 4 Units					
<i>Prerequisite: ARCH 235</i>					
<i>Advisory: ENGL 035 or ENLA 100 or appropriate assessment; READ 023 or appropriate assessment</i>					
<i>Transfers to: UC, CSU</i>					
51756	CLAS	6/20/16 - 7/29/16	TWR 0900 - 1150	Maurice Herman	S310
	LAB	6/20/16 - 7/29/16	TWR 1200 - 1450	Maurice Herman	S310

ART

Division of Arts & Culture Programs

ART 101 Introduction to the Fine Arts 3 Units					
<i>Advisory: ENGL 035 or ENLA 100 or appropriate assessment; READ 023 or appropriate assessment</i>					
<i>Transfers to: UC, CSU</i>					
50093	CLAS	7/11/16 - 8/12/16	MTWR 0800 - 0910	Blair Maffris	B011
	LAB	7/11/16 - 8/12/16	MTWR 0915 - 1310	Blair Maffris	B011

ART 105 Survey of Western Art: Prehistory through the Middle Ages 3 Units					
<i>Advisory: ENGL 035 or ENLA 100 or appropriate assessment; READ 023 or appropriate assessment</i>					
<i>Transfers to: UC (credit limit*), CSU (*Students will receive credit from UC for only one of the following courses: ART 105 or ART 105H)</i>					
50096	CLAS	6/6/16 - 7/8/16	MTWR 0900 - 1125	Cynthia Lewis	A230

ART 106 Survey of Western Art: Renaissance to Contemporary 3 Units					
<i>Advisory: ENGL 035 or ENLA 100 or appropriate assessment; READ 023 or appropriate assessment</i>					
<i>Transfers to: UC (credit limit*), CSU (*Students will receive credit from UC for only one of the following courses: ART 106 or ART 106H)</i>					
50355	CLAS	6/6/16 - 7/8/16	MTWR 1145 - 1410	Cynthia Lewis	A230

ART 108 The Art of Mexico 3 Units					
<i>Advisory: READ 023 or appropriate assessment; ENGL 035 or ENLA 100 or appropriate assessment</i>					
<i>Transfers to: UC, CSU</i>					
51720	CLAS	6/20/16 - 7/29/16	TR 1800 - 2215	Carolyn Robertson	A230

ART 115 The Art of Film 3 Units					
<i>Advisory: ENGL 035 or ENLA 100 or appropriate assessment; READ 023 or appropriate assessment</i>					
<i>Transfers to: UC, CSU</i>					
51721	WEB	6/20/16 - 8/12/16		Sheila Lynch	

ART 130 Freehand Drawing I 3 Units					
<i>Advisory: ENGL 035 or ENLA 100 or appropriate assessment; READ 023 or appropriate assessment</i>					
<i>Transfers to: UC, CSU</i>					
50112	CLAS	6/6/16 - 7/8/16	MTWR 0800 - 0930	Ronald Reeder	B012
	LAB	6/6/16 - 7/8/16	MTWR 0940 - 1300	Ronald Reeder	B012

ART 131 Freehand Drawing II 3 Units					
<i>Prerequisite: ART 130</i>					
<i>Advisory: ENGL 035 or ENLA 100 or appropriate assessment; READ 023 or appropriate assessment</i>					
<i>Transfers to: UC, CSU</i>					
50117	CLAS	6/6/16 - 7/8/16	MTWR 0800 - 0930	Ronald Reeder	B012
	LAB	6/6/16 - 7/8/16	MTWR 0940 - 1300	Ronald Reeder	B012

ART 135 Beginning Painting 3 Units					
<i>Advisory: ENGL 035 or ENLA 100 or appropriate assessment; READ 023 or appropriate assessment; ART 130</i>					
<i>Transfers to: UC, CSU</i>					
51745	CLAS	7/11/16 - 8/12/16	MTWR 0800 - 0930	Margaret Griffith	B012
	LAB	7/11/16 - 8/12/16	MTWR 0935 - 1255	Margaret Griffith	B012

ART 136 Intermediate Painting 3 Units					
<i>Prerequisite: ART 130; ART 135</i>					
<i>Advisory: ENGL 035 or ENLA 100 or appropriate assessment; READ 023 or appropriate assessment</i>					
<i>Transfers to: UC, CSU</i>					
50144	CLAS	7/11/16 - 8/12/16	MTWR 0800 - 0930	Margaret Griffith	B012
	LAB	7/11/16 - 8/12/16	MTWR 0935 - 1255	Margaret Griffith	B012

ART 140 Ceramics I 3 Units					
<i>Advisory: ENGL 030 or ENLA 034 or appropriate assessment; READ 022 or appropriate assessment</i>					
<i>Transfers to: UC, CSU</i>					
50147	CLAS	6/20/16 - 7/29/16	MTWR 0900 - 1015	Jeffrey Netzer	B010
	LAB	6/20/16 - 7/29/16	MTWR 1025 - 1305	Jeffrey Netzer	B010
50149	CLAS	6/20/16 - 7/29/16	MTWR 1800 - 1915	Robert Miller	B010
	LAB	6/20/16 - 7/29/16	MTWR 1925 - 2205	Robert Miller	B010

ART 141 Ceramics II 3 Units					
<i>Prerequisite: ART 140</i>					
<i>Advisory: ENGL 030 or ENLA 034 or appropriate assessment; READ 022 or appropriate assessment</i>					
<i>Transfers to: UC, CSU</i>					
51709	CLAS	6/20/16 - 7/29/16	MTWR 0900 - 1015	Jeffrey Netzer	B010
	LAB	6/20/16 - 7/29/16	MTWR 1025 - 1305	Jeffrey Netzer	B010
51833	CLAS	6/20/16 - 7/29/16	MTWR 1800 - 1915	Robert Miller	B010
	LAB	6/20/16 - 7/29/16	MTWR 1925 - 2205	Robert Miller	B010

ART 164 Graphic Design (Adobe Illustrator) 3 Units					
<i>Advisory: READ 022 or appropriate assessment; ART 120</i>					
<i>Transfers to: CSU</i>					
50170	CLAS	6/6/16 - 7/8/16	MTWR 0900 - 1030	Alexander Gardos	S302
	LAB	6/6/16 - 7/8/16	MTWR 1040 - 1400	Alexander Gardos	S302

CRN	TYPE	DATES	DAYS/TIME	INSTRUCTOR	ROOM
ART 165					
Graphic Design (Advanced Adobe Illustrator) 3 Units					
Prerequisite: ART 164					
Advisory: READ 022 or appropriate assessment; ART 120					
Transfers to: CSU					
50171	CLAS	6/6/16 - 7/8/16	MTWR 0900 - 1030	Alexander Gardos	S302
	LAB	6/6/16 - 7/8/16	MTWR 1040 - 1400	Alexander Gardos	S302

ART 178					
Introduction to Digital Imaging (Adobe Photoshop) 3 Units					
Advisory: READ 022 or appropriate assessment; ART 120					
Transfers to: UC, CSU					
51789	CLAS	7/11/16 - 8/12/16	MTWR 0900 - 1030	Alexander Gardos	S302
	LAB	7/11/16 - 8/12/16	MTWR 1040 - 1400	Alexander Gardos	S302

ART 242					
Advanced Ceramics 3 Units					
Prerequisite: ART 141					
Advisory: ENGL 030 or ENLA 034 or appropriate assessment; READ 022 or appropriate assessment					
Transfers to: UC, CSU					
51710	CLAS	6/20/16 - 7/29/16	MTWR 0900 - 1015	Jeffrey Netzer	B010
	LAB	6/20/16 - 7/29/16	MTWR 1025 - 1305	Jeffrey Netzer	B010
51835	CLAS	6/20/16 - 7/29/16	MTWR 1800 - 1915	Robert Miller	B010
	LAB	6/20/16 - 7/29/16	MTWR 1925 - 2205	Robert Miller	B010

ASSOCIATE DEGREE NURSING

Division of Health Science & Nursing

ADN 151					
Clinical Nursing Concepts 2 Units					
Prerequisite: BIOL 125, BIOL 222, BIOL 226 and ENGL 101 all with a grade of "C" or better					
Corequisite: ADN 151L					
Advisory: READ 023 or appropriate assessment; MATH 070 or MATH 070D or MATH 073 or appropriate assessment					
Transfers to: CSU					
The Board of Registered Nursing requires that students must be concurrently enrolled in both ADN 151 and ADN 151L, and pass both courses together. They cannot be taken individually for credit.					
51778	CLAS	6/6/16 - 7/29/16	W 0800 - 1215	Gail Biesemeyer	TBA

ADN 151L					
Clinical Nursing Concepts Lab 2 Units					
Prerequisite: BIOL 125, BIOL 222, BIOL 226 and ENGL 101 all with a grade of "C" or better					
Corequisite: ADN 151					
Advisory: READ 023 or appropriate assessment; MATH 070 or MATH 070D or MATH 073 or appropriate assessment					
Transfers to: CSU					
The Board of Registered Nursing requires that students must be concurrently enrolled in both ADN 151 and ADN 151L, and pass both courses together. They cannot be taken individually for credit.					

51779	LAB	6/6/16 - 7/1/16	MT 0700 - 1330	Pam Boyd	S208
		7/4/16 - 7/29/16	RF 0700 - 1330	Karla Sonnier	
				Whittier Hospital Med. Ctr	S204
51780	LAB	6/6/16 - 7/1/16	MT 0700 - 1330	Gina Mitchell	S204
		7/7/16 - 7/29/16	RF 0700 - 1330	Gina Mitchell	
				Beverly	
51781	LAB	6/6/16 - 7/1/16	MT 0700 - 1330	K. Lopez-Alvarado	S208
		7/7/16 - 7/29/16	RF 0700 - 1330	Patricia Luna	
				PIH Health Whittier	
51782	LAB	6/6/16 - 7/1/16	RF 0700 - 1330	To Be Assigned	S204
		7/7/16 - 7/29/16	RF 0700 - 1330	To Be Assigned	
				PIH Health Downey	

ASTRONOMY

Division of Mathematics & Sciences

ASTR 110					
General Astronomy 3 Units					
Advisory: ENGL 035 or ENLA 100 or appropriate assessment; READ 023 or appropriate assessment; MATH 030 or MATH 030D or MATH 033 or appropriate assessment					
Transfers to: UC (credit limit*), CSU (*Students will receive credit from UC for only one of the following courses: ASTR 110 or ASTR 110H)					
51739	CLAS	6/6/16 - 7/8/16	MTWR 0800 - 1025	Joseph Rhee	S221

ASTR 112					
Observational Astronomy 1 Unit					
Prerequisite/Corequisite: ASTR 110 with a grade of "C" or better					
Advisory: ENGL 035 or ENLA 100 or appropriate assessment; READ 023 or appropriate assessment; MATH 030 or MATH 030D or MATH 033 or appropriate assessment					
Transfers to: UC (credit limit*), CSU (*Students will receive credit from UC for only one of the following courses: ASTR 112 or ASTR 114)					
51740	CLAS	6/6/16 - 7/8/16	MTWR 1035 - 1300	Joseph Rhee	S230

AUTOMOTIVE TECHNOLOGY

Division of Career & Technical Education

AUTO 101					
Introduction to Automotive Service and Repair: Underhood Service 3 Units					
Advisory: ENGL 035 or ENLA 100 or appropriate assessment; READ 023 or appropriate assessment					
Transfers to: CSU					
50172	CLAS	6/20/16 - 7/29/16	TWR 0830 - 1045	Javier Luna	T144
	LAB	6/20/16 - 7/29/16	TWR 1050 - 1205	Javier Luna	T144

AUTO 102					
Introduction to Honda/Acura Service and Repair 3 Units					
Advisory: READ 023 or appropriate assessment					
Transfers to: CSU					
51753	CLAS	6/20/16 - 7/29/16	TWR 1800 - 2015	Michael Dighera	T141
	LAB	6/20/16 - 7/29/16	TWR 2020 - 2135	Michael Dighera	T141

AUTO 106					
Automotive Electrical Tools and Diagnostic Procedures 3 Units					
Advisory: ENGL 035 or ENLA 100 or appropriate assessment; READ 023 or appropriate assessment					
Transfers to: CSU					
51674	CLAS	6/20/16 - 7/29/16	TWR 1800 - 2015	Steve Tomory	T144
	LAB	6/20/16 - 7/29/16	TWR 2020 - 2135	Steve Tomory	T144

AUTO 107					
Introduction to Automotive Light Service 3 Units					
Prerequisite: AUTO 101, AUTO 103, and AUTO 106					
Advisory: ENGL 035 or ENLA 100 or appropriate assessment; READ 023 or appropriate assessment					
Transfers to: CSU					
51806	CLAS	6/20/16 - 8/12/16	TR 0830 - 1100	Marius Dornean	T154
	LAB	6/20/16 - 8/12/16	TR 1105 - 1230	Marius Dornean	T154

BIOLOGY

Division of Mathematics & Sciences

BIOL 101					
General Biology 4 Units					
Advisory: ENGL 035 or ENLA 100 or appropriate assessment; READ 023 or appropriate assessment; MATH 050 or MATH 050D or MATH 053 or appropriate assessment					
Transfers to: UC (credit limit*), CSU (*Students will receive credit from UC for only one of the following courses: BIOL 101 or BIOL 200)					
50090	CLAS	6/6/16 - 7/8/16	MTWR 1045 - 1310	Megan Fitzgerald	S136
	LAB	6/6/16 - 7/8/16	MTWR 0800 - 1025	Megan Fitzgerald	S130
50098	CLAS	6/6/16 - 7/8/16	MTWR 1045 - 1310	Megan Fitzgerald	S136
	LAB	6/6/16 - 7/8/16	MTWR 1320 - 1545	To Be Assigned	S130
51730	CLAS	6/20/16 - 7/29/16	MTWR 1700 - 1905	Victor Kowalski	S236
	LAB	6/20/16 - 7/29/16	MTWR 1915 - 2120	Victor Kowalski	S132
51811	CLAS	6/20/16 - 7/29/16	MTWR 1330 - 1535	Anna Grygoruk	S136
	LAB	6/20/16 - 7/29/16	MTWR 1545 - 1750	Anna Grygoruk	S132

BIOL 120					
Environmental Biology 3 Units					
Advisory: ENGL 035 or ENLA 100 or appropriate assessment; READ 023 or appropriate assessment; MATH 050 or MATH 050D or MATH 053 or appropriate assessment					
Transfers to: UC, CSU					
50115	CLAS	6/20/16 - 7/29/16	MTWR 1645 - 1850	Stephen Katnik	S136
51089	CLAS	7/11/16 - 8/12/16	MTWR 0800 - 1025	Brandon Jones	S136
51391	CLAS	6/6/16 - 7/8/16	MTWR 0800 - 1025	Stephen Katnik	S136

CRN	TYPE	DATES	DAYS/TIME	INSTRUCTOR	ROOM
BIOL 120L					
Environmental Biology Laboratory 1 Unit					
Prerequisite/Corequisite: BIOL 120					
Advisory: ENGL 035 or ENLA 100 or appropriate assessment; READ 023 or appropriate assessment; MATH 030 or MATH 030D or MATH 033 or appropriate assessment					
Transfers to: UC, CSU					
50126	LAB	6/20/16 - 7/29/16	MTWR 1915 - 2120	Oscar Rivas	S129
51090	LAB	7/11/16 - 8/12/16	MTWR 1045 - 1310	Brandon Jones	S129
51218	LAB	6/6/16 - 7/8/16	MTWR 1045 - 1310	Stephen Katnik	S129

CRN	TYPE	DATES	DAYS/TIME	INSTRUCTOR	ROOM
BIOL 125					
Human Anatomy 4 Units					
Advisory: ENGL 035 or ENLA 100 or appropriate assessment; READ 023 or appropriate assessment; MATH 030 or MATH 030D or MATH 053 or appropriate assessment; BIOL 101					
Transfers to: UC, CSU					
50127	CLAS	6/20/16 - 7/29/16	MTWR 1115 - 1320	Jeronimo Ribaya	S121
	LAB	6/20/16 - 7/29/16	MTWR 0900 - 1105	Jeronimo Ribaya	S101
50129	CLAS	6/20/16 - 7/29/16	MTWR 1115 - 1320	Jeronimo Ribaya	S121
	LAB	6/20/16 - 7/29/16	MTWR 1330 - 1535	Jeronimo Ribaya	S101

CRN	TYPE	DATES	DAYS/TIME	INSTRUCTOR	ROOM
BIOL 226					
Human Physiology 4 Units					
Prerequisite: BIOL 125 and CHEM 110					
Advisory: ENGL 035 or ENLA 100 or appropriate assessment; READ 023 or appropriate assessment; BIOL 101					
Transfers to: UC, CSU					
50132	CLAS	6/6/16 - 7/8/16	MTWR 1115 - 1340	Shelly Spencer	S236
	LAB	6/6/16 - 7/8/16	MTWR 0830 - 1055	Shelly Spencer	S124
51808	CLAS	6/6/16 - 7/8/16	MTWR 1115 - 1340	Shelly Spencer	S236
	LAB	6/6/16 - 7/8/16	MTWR 1350 - 1615	Shelly Spencer	S124

BUSINESS LAW

Division of Business

CRN	TYPE	DATES	DAYS/TIME	INSTRUCTOR	ROOM
BUSL 110					
Legal Environment of Business 3 Units					
Advisory: ENGL 035 or ENLA 100 or appropriate assessment; READ 023 or appropriate assessment					
Transfers to: UC (*credit limit), CSU (*Students will receive credit from UC for only one of the following courses: BUSL 110 or BUSL 220)					
50247	CLAS	6/20/16 - 8/12/16	MW 1800 - 2120	Eric Bladh	B105
50259	WEB	6/20/16 - 8/12/16		Eugene Blackmun	
50267	WEB	6/20/16 - 8/12/16		Eugene Blackmun	

CHEMISTRY

Division of Mathematics & Sciences

CRN	TYPE	DATES	DAYS/TIME	INSTRUCTOR	ROOM
CHEM 110					
Chemistry for Allied Health Majors 5 Units					
Prerequisite: MATH 050 or MATH 050D or MATH 053 or appropriate assessment					
Advisory: ENGL 035 or ENLA 100 or appropriate assessment; READ 023 or appropriate assessment; Concurrent enrollment in MATH 070 or MATH 070D or MATH 073					
Transfers to: UC (credit limit*), CSU (* The UC will grant credit for only one of the following courses: CHEM 110, CHEM 120)					
50702	CLAS	6/6/16 - 7/8/16	MTWR 0900 - 1130	Allen Leung	S333
	DIS	6/6/16 - 7/8/16	MTWR 1135 - 1225	Allen Leung	S324
	LAB	6/6/16 - 7/8/16	MTWR 1300 - 1530	Allen Leung	S324

CRN	TYPE	DATES	DAYS/TIME	INSTRUCTOR	ROOM
CHEM 120					
Introduction to Chemistry 5 Units					
Prerequisite: MATH 070 or MATH 070D or MATH 073 with a grade of "C" or appropriate assessment					
Advisory: ENGL 035 or ENLA 100 or appropriate assessment; READ 023 or appropriate assessment					
Transfers to: UC (credit limit*), CSU (* The UC will grant credit for only one of the following courses: CHEM 110, CHEM 120)					
50350	CLAS	6/6/16 - 7/8/16	MTWR 1000 - 1230	Mathew Koutroulis	S336
	DIS	6/6/16 - 7/8/16	MTWR 1300 - 1350	Mathew Koutroulis	S336
	LAB	6/6/16 - 7/8/16	MTWR 1400 - 1630	Mathew Koutroulis	S331

CHICANO STUDIES

Division of Behavioral & Social Sciences

CRN	TYPE	DATES	DAYS/TIME	INSTRUCTOR	ROOM
CHST 146					
The Mexican American in the History of the U.S. 3 Units					
Advisory: ENGL 035 or ENLA 100 or appropriate assessment; READ 023 or appropriate assessment					
Transfers to: UC, CSU					
51027	CLAS	7/11/16 - 8/12/16	MTWR 1045 - 1310	Juana Mora	A205

CHILD DEVELOPMENT

Division of Behavioral & Social Sciences

CRN	TYPE	DATES	DAYS/TIME	INSTRUCTOR	ROOM
CD 102					
Nutrition, Health and Safety for Children 3 Units					
Advisory: ENGL 035 or ENLA 100 or appropriate assessment; READ 023 or appropriate assessment					
Transfers to: CSU					
50996	WEB	6/20/16 - 8/12/16		Carol Sigala	
51759	CLAS	6/6/16 - 7/8/16	MTWR 0800 - 1025	Patricia Kepner	S220

CRN	TYPE	DATES	DAYS/TIME	INSTRUCTOR	ROOM
CD 106					
Child Growth and Development 3 Units					
Advisory: ENGL 035 or ENLA 100 or appropriate assessment; READ 023 or appropriate assessment					
Transfers to: UC (credit limit *), CSU (*Students will receive credit from UC for only one of the following courses: CD 106 or PSY 112)					
50012	CLAS	6/6/16 - 7/8/16	MTWR 1045 - 1310	Patricia Kepner	S220
51028	CLAS	7/11/16 - 8/12/16	MTWR 0800 - 1025	Kelly Lynch	CDC5
51029	WEB	6/20/16 - 8/12/16		Carol Sigala	

CRN	TYPE	DATES	DAYS/TIME	INSTRUCTOR	ROOM
CD 114					
Observation and Assessment 3 Units					
Advisory: ENGL 035 or ENLA 100 or appropriate assessment; READ 023 or appropriate assessment					
Transfers to: CSU					
51704	CLAS	6/20/16 - 7/29/16	TR 1800 - 2215	Sondra Moe	CDC5

CRN	TYPE	DATES	DAYS/TIME	INSTRUCTOR	ROOM
CD 208					
Child, Family and Community 3 Units					
Advisory: ENGL 035 or ENLA 100 or appropriate assessment; READ 023 or appropriate assessment					
Transfers to: UC, CSU					
51032	CLAS	7/11/16 - 8/12/16	MTWR 1045 - 1310	Kelly Lynch	CDC5
51828	CLAS	6/20/16 - 7/29/16	MW 1800-2215	Carol Sigala	A208

CRN	TYPE	DATES	DAYS/TIME	INSTRUCTOR	ROOM
CD 226					
Introduction to Special Education 3 Units					
Advisory: ENGL 030 or ENLA 034 or appropriate assessment; READ 023 or appropriate assessment					
Transfers to: CSU					
51034	WEB	6/20/16 - 8/12/16		Carol Sigala	

CRN	TYPE	DATES	DAYS/TIME	INSTRUCTOR	ROOM
CD 228					
Early Childhood Education Practicum 3 Units					
Prerequisite: CD 106, CD 110, CD 111, CD 114 and CD 208					
Advisory: READ 023 or appropriate assessment					
Transfers to: CSU					
51807	CLAS	6/6/16 - 8/18/16	MTWR 1430 - 1735	Sondra Moe	CDC5
	LAB	6/6/16 - 8/18/16		Sondra Moe	

CHINESE

Division of Communication & Languages

CRN	TYPE	DATES	DAYS/TIME	INSTRUCTOR	ROOM
CHIN 101					
Chinese I 4 Units					
Advisory: ENGL 035 or ENLA 100 or appropriate assessment; READ 023 or appropriate assessment					
Transfers to: UC, CSU					
51711	CLAS	6/20/16 - 7/29/16	MTWR 1800 - 2100	Yishin Ho	A202

COMPUTER INFORMATION TECHNOLOGY

Division of Business

CIT 101
Introduction to Computer Information Technology **3 Units**
Advisory: ENGL 035 or ENLA 100 or appropriate assessment; READ 023 or appropriate assessment; CIT 100A
Transfers to: UC, CSU

50301	CLAS	6/20/16 - 8/12/16	MW 1800 - 2120	Alexia Sokol	B116
50303	CLAS	6/20/16 - 7/29/16	TR 0800 - 1215	Shin Liu	B116
51123	CLAS	6/6/16 - 7/8/16	MTW 0800 - 1135	Rodolfo Rios	B117
51510	CLAS	6/6/16 - 7/8/16	MTW 1800 - 2135	Rodolfo Rios	B117

CIT 136
Advanced Java Programming **4 Units**
Prerequisite: CIT 135
Advisory: READ 023 or appropriate assessment
Transfers to: UC, CSU

51793	CLAS	6/20/16 - 7/29/16	MTR 1800 - 2205	Shin Liu	B115
-------	------	-------------------	-----------------	----------	------

CIT 155
Introduction to E-Commerce **3 Units**
Advisory: ENGL 030 or ENLA 034 or appropriate assessment; READ 022 or appropriate assessment; MATH 030 or MATH 030D or MATH 033 or appropriate assessment; CIT 101
Transfers to: CSU

51794	CLAS	6/6/16 - 7/8/16	MTWR 0800 - 1035	Jon Whitford	B113
-------	------	-----------------	------------------	--------------	------

CORRECTIONS

Division of Public Safety

CORR 101
Introduction to Corrections **3 Units**
Advisory: ENGL 035 or ENLA 100 or appropriate assessment; READ 023 or appropriate assessment
Transfers to: CSU

50242	WEB	6/6/16 - 7/8/16		David Balch	
-------	-----	-----------------	--	-------------	--

CORR 235
Conflict Resolution **3 Units**
Advisory: ENGL 035 or ENLA 100 or appropriate assessment; READ 023 or appropriate assessment
Transfers to: CSU

51182	WEB	6/6/16 - 7/8/16		David Balch	
-------	-----	-----------------	--	-------------	--

COUNSELING

Division of Counseling & Student Development

COUN 101
College and Life Success **3 Units**
Advisory: ENGL 035 or ENLA 100 or appropriate assessment; READ 023 or appropriate assessment
Transfers to: UC (credit limit), CSU (*The UC will grant a maximum of 3 units credit for COUN 101, 101A, 101B and 151 combined)*

50248	CLAS	6/20/16 - 7/29/16	MW 1730 - 2145	Dorali Pichardo-Diaz	S125
50310	CLAS	6/20/16 - 8/12/16		Henry Saucedo	
51164	CLAS	6/6/16 - 7/8/16	MTWR 0800 - 1025	Jorge Huinquez	S125
51168	CLAS	7/11/16 - 8/12/16	MTWR 0800 - 1025	Mary Rivera	S125
51840	CLAS	7/11/16 - 8/12/16	MTWR 1045 - 1310	Julius Thomas	S125
51843	CLAS	6/20/16 - 7/29/16	TWR 1100 - 1325	Mary Rivera	

El Monte Educational Ctr.

COUN 151
Career Exploration and Life Planning **3 Units**
Advisory: ENGL 035 or ENLA 100 or appropriate assessment; READ 023 or appropriate assessment
Transfers to: UC (credit limit), CSU (*The UC will grant a maximum of 3 units credit for COUN 101, 101A, 101B and 151 combined)*

50254	CLAS	6/20/16 - 7/29/16	TR 1730 - 2145	Dennyse Clark	S125
50312	CLAS	6/20/16 - 8/12/16		Belen Torres Gil	
51169	CLAS	6/6/16 - 7/8/16	MTWR 1045 - 1310	Guadalupe Alvarado	S125
51170	CLAS	7/11/16 - 8/12/16	MTWR 0800 - 1025	Jose Rodriguez	
51844	CLAS	6/20/16 - 7/29/16	MTWR 0800 - 1050	To Be Assigned	

El Monte Educational Ctr

DANCE

Division of Kinesiology, Dance, and Athletics

DANC 153
Ballet I **1 Unit**
Advisory: ENGL 035 or ENLA 100 or appropriate assessment; READ 023 or appropriate assessment
Transfers to: UC, CSU

51821	LAB	6/6/16 - 7/8/16	MTWR 1045 - 1310	Paige Melvin	PE141
-------	-----	-----------------	------------------	--------------	-------

DANC 154
Jazz Dance I **1 Unit**
Advisory: ENGL 035 or ENLA 100 or appropriate assessment; READ 023 or appropriate assessment
Transfers to: UC, CSU

51796	LAB	6/20/16 - 7/29/16	MTWR 1800 - 2005	Kristina Karmiryan	PE141
-------	-----	-------------------	------------------	--------------------	-------

DANC 159
Choreography I **3 Units**
Advisory: ENGL 035 or ENLA 100 or appropriate assessment; READ 023 or appropriate assessment; DANC 151
Transfers to: UC, CSU

51816	LAB	7/11/16 - 8/12/16	MTWR 1045 - 1310	Alyson Cartagena	PE141
	WEB	7/11/16 - 8/12/16		Alyson Cartagena	

DANC 199
Dance Appreciation **3 Units**
Advisory: ENGL 035 or ENLA 100 or appropriate assessment; READ 023 or appropriate assessment
Transfers to: UC, CSU

51398	WEB	6/20/16 - 8/12/16		Alyson Cartagena	
-------	-----	-------------------	--	------------------	--

ECONOMICS

Division of Behavioral & Social Sciences

ECON 101
Principles of Macroeconomics **3 Units**
Prerequisite: MATH 050 or MATH 050D or MATH 053 with a grade of "C" or better or appropriate assessment
Advisory: ENGL 035 or ENLA 100 or appropriate assessment; READ 023 or appropriate assessment
Transfers to: UC, CSU

50022	WEB	6/6/16 - 8/12/16		Dezzie Prewitt	
51039	CLAS	6/6/16 - 7/8/16	MTWR 0800 - 1025	Barbara Mikalson	A225
51792	WEB	6/6/16 - 8/12/16		Dezzie Prewitt	

ECON 102
Principles of Microeconomics **3 Units**
Prerequisite: MATH 050 or MATH 050D or MATH 053 or appropriate assessment
Advisory: ENGL 035 or ENLA 100 or appropriate assessment; READ 023 or appropriate assessment
Transfers to: UC, CSU

51041	WEB	6/20/16 - 8/12/16		Mike Javanmard	
51705	CLAS	6/6/16 - 7/8/16	MTWR 1045 - 1310	Barbara Mikalson	A225
51706	WEB	6/20/16 - 8/12/16		Mike Javanmard	

ELECTRONICS

Division of Career & Technical Education

ELEC 050
Introduction to the Electrical Industry **2 Units**
Advisory: READ 023 or appropriate assessment

51817	CLAS	6/20/16 - 7/29/16	TWR 1800 - 1915	To Be Assigned	T103
	LAB	6/20/16 - 7/29/16	TWR 1920 - 2035	To Be Assigned	T103

EMERGENCY MEDICAL TECHNICIAN

Division of Public Safety

EMT 093
Emergency Medical Technician **8 Units**
Prerequisite: FTEC 121
Advisory: ENGL 035 or ENLA 100 or appropriate assessment; READ 023 or appropriate assessment; BIOL 125

50287	CLAS	6/27/16 - 8/18/16	MTWR 0800 - 1130	Scott Jaeggi	
	LAB	6/27/16 - 8/18/16	MTWR 1135 - 1400	Santa Fe Springs Trng. Ctr	
				Scott Jaeggi	
				Santa Fe Springs Trng. Ctr	

ENGINEERING

Division of Mathematics & Sciences

ENGR 235		3 Units
Engineering Mechanics: Statics		
<i>Prerequisite: PHY 211 with a grade of "C" or better</i>		
<i>Prerequisite/Corequisite: MATH 191 with a grade of "C" or better</i>		
<i>Transfers to: UC, CSU</i>		
51716	CLAS 6/20/16 - 7/29/16	MTWR 1900 - 2140 Sean Hughes S306

ENGINEERING TECHNOLOGY

Division of Mathematics & Sciences

ENGT 101		3 Units
Introduction to Technical Drawing & Graphics		
<i>Advisory: ENGL 030 or ENLA 034 or appropriate assessment; READ 023 or appropriate assessment</i>		
<i>Transfers to: CSU</i>		
50684	CLAS 6/20/16 - 7/29/16	TWR 0800 - 1015 Gary Halvorson S304
	LAB 6/20/16 - 7/29/16	TWR 1020 - 1320 Gary Halvorson S304

ENGT 150		4 Units
AutoCAD for Basic CADD Applications		
<i>Advisory: ENGL 030 or ENLA 034 or appropriate assessment; READ 023 or appropriate assessment; ENGT 101 or two years of high school drafting</i>		
<i>Transfers to: CSU</i>		
50685	CLAS 6/20/16 - 7/29/16	TWR 0800 - 1100 Joseph Sunyogh S307
	LAB 6/20/16 - 7/29/16	TWR 1105 - 1405 Joseph Sunyogh S307

ENGLISH

Division of Communications & Languages

ENGL 030		3 Units
Introductory Composition for Developing Writers		
<i>Corequisite: ENGL 030W</i>		
<i>Advisory: READ 022 or appropriate assessment</i>		
<i>Students must concurrently enroll in the one-unit Writing Workshop, ENGL 030W. This is a non-degree applicable course and is offered on a pass/no pass basis.</i>		
50410	CLAS 6/20/16 - 7/29/16	TWR 1800 - 2050 Celestine Candida A218
51095	CLAS 6/6/16 - 7/8/16	MTWR 0800 - 1025 To Be Assigned A213

ENGL 030W		0.5 Units
Writing Workshop		
<i>Corequisite: ENGL 030</i>		
<i>Advisory: READ 022 or appropriate assessment</i>		
<i>All ENGL 030 students must enroll in this course. This course may be repeated one time for credit. This is a non-degree applicable course offered on a pass-no pass basis.</i>		
50407	LAB 6/20/16 - 7/29/16	TWR 1630 - 1745 Celestine Candida A210
51094	LAB 6/6/16 - 7/8/16	MTWR 0640 - 0750 To Be Assigned LR124

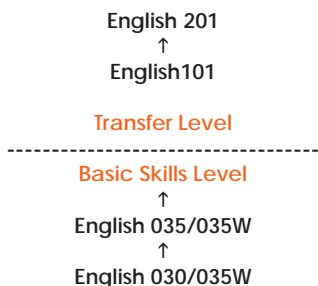
ENGL 035		3 Units
Intermediate Composition for Developing Writers		
<i>Prerequisite: ENGL 030 or ENLA 034 with a grade of "Pass" or appropriate assessment</i>		
<i>Corequisite: ENGL 035W</i>		
<i>(Each week, three additional hours will be required in the ENGL 035W Writing Workshop, offered on a pass/no pass basis.)</i>		
50440	CLAS 6/6/16 - 7/8/16	MTWR 0800 - 1025 Kenneth Anderson A227
50443	CLAS 6/20/16 - 7/29/16	TWR 1800 - 2050 Henry Cascella A211
51146	WEB 6/20/16 - 8/12/16	Lily Isaac
51741	CLAS 6/20/16 - 8/12/16	M 1130 - 1420 Muata Kamdibe LR129
	VC 6/20/16 - 8/12/16	Muata Kamdibe

ENGL 035W		0.5 Units
Writing Workshop		
<i>Corequisite: ENGL 035</i>		
<i>Advisory: READ 022 or appropriate assessment</i>		
<i>All English 035 students must enroll in this course. This course may be repeated one time for credit. This is a non-degree applicable course offered on a pass-no pass basis.</i>		
50437	LAB 6/6/16 - 7/8/16	MTWR 0640 - 0750 Kenneth Anderson LR124
51145	LAB 6/20/16 - 7/29/16	TWR 1630 - 1745 Henry Cascella LR124
51147	WEBL 6/20/16 - 8/12/16	Lily Isaac
51742	VC 6/20/16 - 8/12/16	Muata Kamdibe

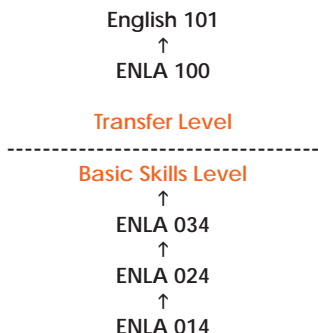
ENGL 101		3.5 Units
College Composition and Research		
<i>Prerequisite: ENGL 035 with a grade of "Pass" or ENLA 100 with an "A" or "B" or appropriate assessment</i>		
<i>Transfers to: UC, CSU</i>		
<i>This course is designed for students who wish to fulfill the General Education requirement for Written Communication.</i>		
50450	CLAS 6/20/16 - 7/29/16	TWR 1500 - 1750 Katrina Jalloh A216
50450	LAB 6/20/16 - 7/29/16	TWR 1800 - 1915 Katrina Jalloh LR124
50454	CLAS 6/6/16 - 7/8/16	MTWR 0800 - 1025 Tyler Okamoto LR129
	LAB 6/6/16 - 7/8/16	MTWR 0640 - 0750 Tyler Okamoto LR124
50455	CLAS 6/20/16 - 7/29/16	TWR 1100 - 1350 Juan Fernandez A208
	LAB 6/20/16 - 7/29/16	TWR 0935 - 1050 Claire Koehler LR124
50456	CLAS 6/20/16 - 7/29/16	TWR 1500 - 1750 Marina Markossian A215
	LAB 6/20/16 - 7/29/16	TWR 1800 - 1915 Marina Markossian LR124
50457	CLAS 6/6/16 - 7/8/16	MTWR 0800 - 1025 Henry Leonor A215
	LAB 6/6/16 - 7/8/16	MTWR 1040 - 1150 Henry Leonor A210
50458	CLAS 6/20/16 - 7/29/16	TWR 1500 - 1750 Steven Pokornowski A213
	LAB 6/20/16 - 7/29/16	TWR 1800 - 1915 Steven Pokornowski LR124
50459	CLAS 6/20/16 - 7/29/16	TWR 1800 - 2050 Holly Vance A227
	LAB 6/20/16 - 7/29/16	TWR 1635 - 1750 Holly Vance LR124
50460	CLAS 6/20/16 - 7/29/16	TWR 1800 - 2050 Aileen Acosta-Mata LR129
	LAB 6/20/16 - 7/29/16	TWR 1635 - 1750 Aileen Acosta-Mata LR129
50461	CLAS 6/20/16 - 7/29/16	TWR 0800 - 1050 Maxine Sweeney A211
	LAB 6/20/16 - 7/29/16	TWR 1100 - 1215 Maxine Sweeney LR124
50462	CLAS 6/6/16 - 7/8/16	MTWR 1045 - 1310 Dana Vazquez A227
	LAB 6/6/16 - 7/8/16	MTWR 1320 - 1435 Henry Leonor LR124
50463	WEB 6/20/16 - 8/12/16	Alonso Garcia
	WEBL 6/20/16 - 8/12/16	Alonso Garcia
50698	CLAS 6/20/16 - 7/29/16	TWR 0800 - 1050 Juan Fernandez A214
	LAB 6/20/16 - 7/29/16	TWR 1100 - 1215 To Be Assigned LR124
50699	CLAS 6/20/16 - 7/29/16	TWR 1100 - 1350 Cynthia Philpot A204
	LAB 6/20/16 - 7/29/16	TWR 0935 - 1050 Cynthia Philpot LR124
50700	CLAS 6/20/16 - 7/29/16	TWR 1100 - 1350 Ilona Missakian A200
	LAB 6/20/16 - 7/29/16	TWR 0935 - 1050 Ilona Missakian LR124

English (ENGL) Sequence

The college assessment process determines if a student places in English 030/035W, English 035/035W, or English 101.



English as a New Language (ENLA) Sequence



ENGL 101 continued

CRN	TYPE	DATES	DAYS/TIME	INSTRUCTOR	ROOM	CRN	TYPE	DATES	DAYS/TIME	INSTRUCTOR	ROOM
ENGL 101 continued											
50701	WEB	6/20/16 - 8/12/16		Dana Vazquez							
	WEBL	6/20/16 - 8/12/16		Dana Vazquez							
51155	WEB	6/20/16 - 8/12/16		Dana Vazquez							
	WEBL	6/20/16 - 8/12/16		Dana Vazquez							
51156	WEB	6/20/16 - 8/12/16		Lily Isaac							
	WEBL	6/20/16 - 8/12/16		Lily Isaac							
51157	WEB	6/20/16 - 8/12/16		Michelle Bean							
	WEBL	6/20/16 - 8/12/16		Michelle Bean							
51565	WEB	6/20/16 - 8/12/16		Michelle Bean							
	WEBL	6/20/16 - 8/12/16		Michelle Bean							
51822	WEB	6/20/16 - 8/12/16		Angela Rhodes							
	WEBL	6/20/16 - 8/12/16		Angela Rhodes							
51743	CLAS	6/6/16 - 7/8/16	MTWR 0800 - 1025	EM102							
	LAB	6/6/16 - 7/8/16	MTWR 1040 - 1150	EM102	El Monte Educational Ctr						

ENGL 201
Advanced Composition and Critical Thinking **3.5 Units**
Prerequisite: ENGL 101 with a grade of "C" or better
Advisory: READ 023 or appropriate assessment
Transfers to: UC (credit limit), CSU (*Students will receive credit from UC for only one of the following courses: ENGL 201 or ENGL 201H)*

50469	CLAS	6/20/16 - 7/29/16	TWR 1100 - 1350	Kenneth Pierson	LR119
	LAB	6/20/16 - 7/29/16	TWR 1400 - 1515	Kenneth Pierson	LR124
50472	CLAS	7/11/16 - 8/12/16	MTWR 1045 - 1310	Samuel Isaac	A206
	LAB	7/11/16 - 8/12/16	MTWR 1320 - 1430	Samuel Isaac	LR124
50473	WEB	6/20/16 - 8/12/16		Lorraine Jeffrey	
	WEBL	6/20/16 - 8/12/16		Lorraine Jeffrey	
50474	CLAS	6/20/16 - 7/29/16	TWR 1045 - 1335	Sally Olivas	A213
	LAB	6/20/16 - 7/29/16	TWR 0920 - 1035	Sally Olivas	A210
50475	CLAS	6/20/16 - 7/29/16	TWR 1800 - 2050	David Cowper	LR123
	LAB	6/20/16 - 7/29/16	TWR 1630 - 1750	David Cowper	LR124
50476	WEB	6/20/16 - 8/12/16		Lorraine Jeffrey	
	WEBL	6/20/16 - 8/12/16		Lorraine Jeffrey	
50477	WEB	6/20/16 - 8/12/16		Angela Rhodes	
	WEBL	6/20/16 - 8/12/16		Angela Rhodes	
50478	CLAS	6/20/16 - 7/29/16	TWR 0800 - 1050	William Curington	A204
	LAB	6/20/16 - 7/29/16	TWR 1100 - 1215	William Curington	LR124
51118	CLAS	7/11/16 - 8/12/16	MTWR 1045 - 1310	Lily Isaac	A215
	LAB	7/11/16 - 8/12/16	MTWR 1320 - 1430	Henry Leonor	A210
51856	CLAS	6/6/16 - 7/8/16	MTWR 0800 - 1025	Ralph Velazquez	SW103
	LAB	6/6/16 - 7/8/16	MTWR 1040 - 1150	Ralph Velazquez	SW103

ENGL 201H
Advanced Composition and Critical Thinking Honors **3.5 Units**
Prerequisite: Completion of ENGL 101 with a grade of at least a "C" or better
Transfers to: UC (credit limit), CSU (*Students will receive credit from UC for only one of the following courses: ENGL 201 or ENGL 201H)*

50483	CLAS	6/20/16 - 7/29/16	TWR 1100 - 1350	Claire Koehler	LR129
	LAB	6/20/16 - 7/29/16	TWR 1400 - 1515	Claire Koehler	LR129

ENGLISH AS A NEW LANGUAGE
 Division of Communications & Languages

ENLA 013
Basic Grammar **3 Units**
Advisory: NESL 018 or appropriate assessment
 This course is offered on a pass/no pass basis and is not applicable to the degree. Students are expected to complete an additional 8 hours TBA (To Be Arranged) in the Language Lab.

51800	CLAS	6/20/16 - 7/29/16	MTWR 1515 - 1720	Jessica Tapia	A204
	LAB	6/20/16 - 7/29/16	M 1730 - 1840	Jessica Tapia	LR117

ENVIRONMENTAL TECHNOLOGY
 Division of Mathematics & Sciences

ET 120
Introduction to Alternative Energy Technology (Same as AET 120) **3 Units**
Advisory: ENGL 035 or ENLA 100 or appropriate assessment; READ 023 or appropriate assessment; MATH 030 or MATH 030D or MATH 033 or appropriate assessment
Transfers to: CSU

51826	CLAS	6/20/16 - 7/29/16	TWR 1800 - 2015	To Be Assigned	T101
	LAB	6/20/16 - 7/29/16	TWR 2020 - 2135	To Be Assigned	T101

ET 121
Photovoltaic Systems Design and Installation (Same as AET 121) **3 Units**
Advisory: ENGL 035 or ENLA 100 or appropriate assessment; READ 023 or appropriate assessment; MATH 030 or MATH 030D or MATH 033 or appropriate assessment
Transfers to: CSU

51791	CLAS	6/20/16 - 7/29/16	TWR 0900 - 1115	David Lindy	T101
	LAB	6/20/16 - 7/29/16	TWR 1120 - 1235	David Lindy	T101

FIRE ACADEMY
 Division of Public Safety

FAC 043
Advanced Fire Course **3 Units**
0.741 Units
Advisory: ENGL 035 or ENLA 100 or appropriate assessment; READ 023 or appropriate assessment

51859	CLAS	6/6/16 - 6/10/16	MT 0800 - 1600	Tracy Rickman	
	LAB	6/6/16 - 6/10/16	MT 0800 - 1600	Santa Fe Springs Training Ctr	

FIRE TECHNOLOGY
 Division of Public Safety

FTEC 044
Physical Fitness and Ability for the Firefighter **3 Units**
Prerequisite: Student must be able to lift 75lbs., drag a 150 pound "drag dummy", and use a sledge hammer in completion of a physical abilities test.
Advisory: ENGL 035 or ENLA 100 or appropriate assessment; READ 023 or appropriate assessment

51184	CLAS	6/20/16 - 7/29/16	TWR 0800 - 1000	Tracy Rickman	
	LAB	6/20/16 - 7/29/16	TWR 1010 - 1310	Santa Fe Springs Training Ctr	

FTEC 101
Fire Protection Organization **3 Units**
Advisory: ENGL 035 or ENLA 100 or appropriate assessment; READ 023 or appropriate assessment
Transfers to: CSU

51786	CLAS	6/20/16 - 7/29/16	TWR 0800 - 1050	Ryan Carey	
	LAB	6/20/16 - 7/29/16	TWR 1010 - 1310	Santa Fe Springs Training Ctr	

FTEC 102
Principles of Fire & Emergency Services Safety & Survival **3 Units**
Advisory: ENGL 035 or ENLA 100 or appropriate assessment; READ 023 or appropriate assessment
Transfers to: CSU

51191	WEB	6/6/16 - 7/8/16		Martin Johnson	
-------	-----	-----------------	--	----------------	--

FTEC 103
Fire Behavior and Combustion **3 Units**
Advisory: ENGL 035 or ENLA 100 or appropriate assessment; READ 023 or appropriate assessment
Transfers to: CSU

51186	WEB	6/6/16 - 7/8/16		Daniel Coffman	
-------	-----	-----------------	--	----------------	--

FTEC 104
Fire Prevention Technology **3 Units**
Advisory: ENGL 035 or ENLA 100 or appropriate assessment; READ 023 or appropriate assessment
Transfers to: CSU

50272	WEB	6/6/16 - 7/8/16		Daniel Coffman	
-------	-----	-----------------	--	----------------	--

FTEC 105
Building Construction for Fire Protection **3 Units**
Advisory: ENGL 035 or ENLA 100 or appropriate assessment; READ 023 or appropriate assessment
Transfers to: CSU

51787	WEB	6/6/16 - 7/8/16		Gerald Wallace	
-------	-----	-----------------	--	----------------	--

CRN	TYPE	DATES	DAYS/TIME	INSTRUCTOR	ROOM
FTEC 106					
Fire Protection Equipment and Systems 3 Units					
Advisory: ENGL 035 or ENLA 100 or appropriate assessment; READ 023 or appropriate assessment					
Transfers to: CSU					
51187	WEB	6/6/16 - 7/8/16		Gerald Wallace	

FTEC 121					
Emergency Response 3 Units					
Advisory: ENGL 035 or ENLA 100 or appropriate assessment; READ 023 or appropriate assessment					
Transfers to: CSU					
This course may be repeated once.					
51188	CLAS	5/31/16 - 6/24/16	TWR 0800 - 1050	Scott Jaeggi	
	LAB	5/31/16 - 6/24/16	TWR 1100 - 1515	Scott Jaeggi	Santa Fe Springs Training Ctr Santa Fe Springs Training Ctr

FRENCH

Division of Communications & Languages

FR 101					
French I 4 Units					
Advisory: ENGL 030 or ENLA 034 or appropriate assessment; READ 023 or appropriate assessment					
Transfers to: UC, CSU					
50717	CLAS	6/6/16 - 7/8/16	MTWR 1320 - 1640	James Bowen	A202
	LAB	6/6/16 - 7/8/16	MTW 1215 - 1315	James Bowen	LR117

GEOGRAPHIC INFORMATION SYSTEMS

Division of Career & Technical Education

GIS 120					
Introduction to Geographic Information Systems and Spatial Analysis 4 Units					
Advisory: ENGL 030 or ENLA 034 or appropriate assessment; READ 023 or appropriate assessment; CIT 101					
Transfers to: UC (credit limit*), CSU (*Students will receive credit from UC for only one of the following courses: GIS 120 or GIS 220)					
50133	LAB	6/20/16 - 8/12/16	TR 0900 - 1210	Warren Roberts	T102
	WEB	6/20/16 - 8/12/16		Warren Roberts	

GEOGRAPHY

Division of Mathematics & Sciences

GEOG 101					
Introduction to Physical Geography 3 Units					
Advisory: ENGL 035 or ENLA 100 or appropriate assessment; READ 023 or appropriate assessment; MATH 050 or MATH 050D or MATH 053 or appropriate assessment					
Transfers to: UC, CSU					
51097	WEB	6/6/16 - 8/12/16		Aimee Mindes	

GEOG 101L					
Introduction to Physical Geography Laboratory 1 Unit					
Prerequisite/Corequisite: GEOG 101					
Advisory: ENGL 035 or ENLA 100 or appropriate assessment; READ 023 or appropriate assessment; MATH 050 or MATH 050D or MATH 053 or appropriate assessment					
Transfers to: UC, CSU					
51098	WEBL	6/6/16 - 8/12/16		Aimee Mindes	

GEOG 102					
Introduction to Cultural Geography 3 Units					
Advisory: ENGL 035 or ENLA 100 or appropriate assessment; READ 023 or appropriate assessment					
Transfers to: UC, CSU					
51393	WEB	6/6/16 - 8/12/16		Aimee Mindes	

GEOLOGY

Division of Mathematics & Sciences

GEOG 150					
Physical Geology 3 Units					
Advisory: ENGL 035 or ENLA 100 or appropriate assessment; READ 023 or appropriate assessment; MATH 030 or MATH 030D or MATH 033 or appropriate assessment					
Transfers to: UC, CSU					
51099	CLAS	6/6/16 - 7/8/16	MTWR 1045 - 1310	Michael Forrest	S221
51809	CLAS	7/11/16 - 8/12/16	MTWR 1045 - 1310	Michael Forrest	S221

GEOG 151					
Physical Geology Laboratory 1 Unit					
Prerequisite/Corequisite: GEOG 150					
Advisory: ENGL 035 or ENLA 100 or appropriate assessment; READ 023 or appropriate assessment; MATH 030 or MATH 030D or MATH 033 or appropriate assessment					
Transfers to: UC, CSU					
51100	CLAS	6/6/16 - 7/8/16	MTW 1320 - 1640	Michael Forrest	S229
51810	LAB	7/11/16 - 8/12/16	MTW 1320 - 1640	Michael Forrest	S229

HEAVY EQUIPMENT TECHNOLOGY

Division of Career & Technical Education

HET 042					
Heavy Equipment Heating, Ventilation and Air-Conditioning 2 Units					
Advisory: ENGL 035 or ENLA 100 or appropriate assessment; READ 023 or appropriate assessment					
51677	CLAS	6/20/16 - 7/29/16	TWR 1800 - 1915	Marius Dornean	T118A
	LAB	6/20/16 - 7/29/16	TWR 1920 - 2035	Marius Dornean	T118A

HISTORY

Division of Behavioral & Social Sciences

HIST 101					
History of World Civilization to the 17th Century 3 Units					
Advisory: ENGL 035 or ENLA 100 or appropriate assessment; READ 023 or appropriate assessment					
Transfers to: UC, CSU					
51044	WEB	6/6/16 - 8/12/16		Jose Duran	

HIST 102					
History of World Civilization, 1500 to the Present 3 Units					
Advisory: ENGL 035 or ENLA 100 or appropriate assessment; READ 023 or appropriate assessment					
Transfers to: UC, CSU					
51045	WEB	6/6/16 - 8/12/16		Jose Duran	

HIST 143					
History of the United States to 1877 3 Units					
Advisory: ENGL 030 or ENLA 034 or appropriate assessment; READ 023 or appropriate assessment					
Transfers to: UC, CSU					
50040	CLAS	6/20/16 - 7/29/16	MW 1800 - 2215	David Hall	A224
51046	CLAS	7/11/16 - 8/12/16	MTWR 1045 - 1310	Abbie Perry	A223
51049	CLAS	6/6/16 - 7/8/16	MTWR 1100 - 1325	Wanda Mullikin	South Whittier Ed. Ctr
51762	WEB	6/6/16 - 8/12/16		Abbie Perry	

HIST 144					
History of the United States Since 1865 3 Units					
Advisory: ENGL 030 or ENLA 034 or appropriate assessment; READ 023 or appropriate assessment					
Transfers to: UC (credit limit:*), CSU (*Students will receive credit from UC for only one of the following courses: HIST 144 or HIST 144H)					
51052	CLAS	7/11/16 - 8/12/16	MTWR 0800 - 1025	Abbie Perry	A224
51053	CLAS	7/11/16 - 8/12/16	MTWR 0800 - 1025	Jose Duran	A223
51054	CLAS	6/20/16 - 7/29/16	TR 1800 - 2215	Wanda Mullikin	A224
51055	WEB	6/6/16 - 8/12/16		Irma Valdivia	
51056	CLAS	6/6/16 - 7/8/16	MTWR 1045 - 1310	Ea Madrigal	A223
51420	WEB	6/6/16 - 8/12/16		Ea Madrigal	
51748	WEB	6/6/16 - 8/12/16		Irma Valdivia	

CRN	TYPE	DATES	DAYS/TIME	INSTRUCTOR	ROOM
HIST 159					
History of Minorities: Mexican Americans, Asian Americans and American Women 3 Units					
Advisory: ENGL 030 or ENLA 034 or appropriate assessment; READ 023 or appropriate assessment					
Transfers to: UC (credit limit*), CSU (*Students will receive credit from UC for only one of the following courses: HIST 159 or HIST 159H)					
51057	CLAS	7/11/16 - 8/12/16	MTWR 1045 - 1310	Jamahl Melton	A223

HUMANITIES

Division of Behavioral & Social Sciences

HUM 110					
Survey of Humanities 3 Units					
Advisory: ENGL 035 or ENLA 100 or appropriate assessment; READ 023 or appropriate assessment					
Transfers to: UC, CSU					
51058	WEB	6/20/16 - 8/12/16		Hector Gonzalez	

HUM 111					
Survey of Humanities 3 Units					
Advisory: ENGL 035 or ENLA 100 or appropriate assessment; READ 023 or appropriate assessment					
Transfers to: UC, CSU					
51059	CLAS	6/6/16 - 7/8/16	MTWR 0800 - 1025	Carmina Quirarte	A205
51853	CLAS	6/6/16 - 7/8/16	MTWR 0800 - 1025	Domingo Rodriguez	SW108 So. Whittier Educational Ctr

HUM 125					
Introduction to Mexican Culture 3 Units					
Advisory: ENGL 035 or ENLA 100 or appropriate assessment; READ 023 or appropriate assessment					
Transfers to: UC (credit limit*), CSU (*Students will receive credit from UC for only one of the following courses: HUM 125 or HUM 125H)					
50052	CLAS	6/20/16 - 7/29/16	MW 1800 - 2215	Albert Ocon	A205
51060	WEB	6/20/16 - 8/12/16		Hector Gonzalez	

JOURNALISM

Division of Communications & Languages

JOUR 230					
Magazine Production 3 Units					
Prerequisite: ENGL 035 or ENLA 100 or appropriate assessment					
Advisory: READ 023 or appropriate assessment					
Transfers to: CSU					
51412	CLAS	6/6/16 - 7/8/16	TWR 0800 - 1010	John Francis	B112
	LAB	6/6/16 - 7/8/16		John Francis	

JOUR 231					
Digital Magazine Production 3 Units					
Advisory: ENGL 035 or ENLA 100 or appropriate assessment; READ 023 or appropriate assessment					
Transfers to: CSU					
51413	CLAS	6/6/16 - 7/8/16	TWR 0800 - 1010	John Francis	B112
	LAB	6/6/16 - 7/8/16		John Francis	

JOUR 299					
Directed Study: Journalism 1 Unit					
Transfers to: UC, CSU					
Students may take directed study courses for a maximum of three (3) units within a discipline, and may not accumulate more than a total of nine (9) units college wide.					
51824	ARR	6/6/16 - 7/8/16		John Francis	

KINESIOLOGY THEORY

Division of Kinesiology, Dance, and Athletics

KIN 122					
Nutrition for Sport and Fitness 3 Units					
Advisory: ENGL 035 or ENLA 100 or appropriate assessment; READ 023 or appropriate assessment; MATH 050 or MATH 050D or MATH 053 or appropriate assessment					
Transfers to: CSU					
51696	WEB	6/20/16 - 8/12/16		Jodi Senk	

KIN 193					
Standard First Aid and CPR 3 Units					
Advisory: ENGL 035 or ENLA 100 or appropriate assessment; READ 023 or appropriate assessment					
Transfers to: UC, CSU					
51684	CLAS	6/6/16 - 7/8/16	MTWR 0800 - 1025	Armando Ayala	PE103

KIN 196					
Health: Fitness and Wellness 3 Units					
Advisory: ENGL 035 or ENLA 100 or appropriate assessment; READ 023 or appropriate assessment					
Transfers to: UC (credit limit*), CSU (*Students will receive credit from UC for only one of the following courses: KIN 191, KIN 192, or KIN 196)					
51697	WEB	6/20/16 - 8/12/16		Armando Ayala	

KINESIOLOGY

Division of Kinesiology, Dance, and Athletics

KINA 101					
Tennis I 1 Unit					
Advisory: ENGL 035 or ENLA 100 or appropriate assessment; READ 022 or appropriate assessment					
Transfers to: UC (credit limit*), CSU (*The UC will grant a maximum of 4 units credit for PE activity courses)					
51690	LAB	6/6/16 - 7/8/16	MTWR 1045 - 1310	Karen Unger	Tennis Courts

KINA 117					
Swimming I 1 Unit					
Advisory: ENGL 030 or ENLA 034 or appropriate assessment; READ 022 or appropriate assessment					
Transfers to: UC (credit limit*), CSU (*The UC will grant a maximum of 4 units credit for PE activity courses)					
51685	LAB	6/6/16 - 7/8/16	MTWR 1045 - 1310	Michael Hinze	Pool

KINA 130					
Lifelong Fitness Laboratory 1 Unit					
Advisory: ENGL 030 or ENLA 034 or appropriate assessment; READ 023 or appropriate assessment					
Transfers to: UC (credit limit*), CSU (*The UC will grant a maximum of 4 units credit for PE activity courses) Offered on a pass/no pass basis.					
51679	ARR	6/6/16 - 8/12/16		Kathy Pudelko	PE150

KINA 132					
Aqua Aerobics 1 Unit					
Advisory: ENGL 030 or ENLA 034 or appropriate assessment; READ 022 or appropriate assessment					
Transfer to: UC (credit limit*), CSU (*The UC will grant a maximum of 4 units credit for PE activity courses)					
51702	LAB	7/11/16 - 8/12/16	MTWR 1045 - 1310	Bianca Urquidi	Pool

KINA 136					
Pilates Mat I 1 Unit					
Advisory: ENGL 030 or ENLA 034 or appropriate assessment; READ 022 or appropriate assessment					
Transfers to: UC (credit limit*), CSU (*The UC will grant a maximum of 4 units credit for PE activity courses)					
51686	LAB	6/6/16 - 7/8/16	MTWR 0800 - 1025	Carol McDowell	PE141
51812	LAB	7/11/16 - 8/12/16	MTWR 0800 - 1025	Elizabeth Curtis	PE141

KINA 139					
Cross Training for Fitness 1 Unit					
Advisory: ENGL 030 or ENLA 034 or appropriate assessment; READ 022 or appropriate assessment					
Transfers to: UC (credit limit*), CSU (*The UC will grant a maximum of 4 units credit for PE activity courses)					
51682	LAB	6/6/16 - 7/8/16	MTWR 0800 - 1025	Jodi Senk	PE137

KINA 140					
Walking for Fitness 1 Unit					
Advisory: ENGL 030 or ENLA 034 or appropriate assessment; READ 023 or appropriate assessment					
Transfers to: UC (credit limit*), CSU (*The UC will grant a maximum of 4 units credit for PE activity courses)					
51683	LAB	6/6/16 - 7/8/16	MTWR 0800 - 1025	Karen Unger	Track
51799	LAB	7/11/16 - 8/12/16	MTWR 0800 - 1025	Todd Lim	Track

CRN	TYPE	DATES	DAYS/TIME	INSTRUCTOR	ROOM
KINA 147					
Off-Season Conditioning for Intercollegiate Sports 1 Unit					
Advisory: ENGL 030 or ENLA 034 or appropriate assessment; READ 022 or appropriate assessment					
Transfers to: UC (credit limit*), CSU (*The UC will grant a maximum of 4 units credit for PE activity courses)					
51691	LAB	6/20/16 - 7/29/16	TWR 0700 - 1000	Stephen Smith	Pool
51694	LAB	6/20/16 - 7/29/16	MTWR 1830 - 2035	Michael Tellez	PE301
51698	LAB	7/11/16 - 8/12/16	MTWR 0800 - 1025	Teddi Esko	G100
51757	LAB	6/20/16 - 7/29/16	MTWR 1830 - 2035	Todd Lim	Pool
51819	LAB	6/6/16 - 7/8/16	MTWR 1505 - 1730	Orlando Brenes	Soccer Field

KINA 148					
Strength Training 1 Unit					
Advisory: ENGL 030 or ENLA 034 or appropriate assessment; READ 022 or appropriate assessment					
Transfers to: UC (credit limit*), CSU (*The UC will grant a maximum of 4 units credit for PE activity courses)					
51699	LAB	7/11/16 - 8/12/16	MTWR 0800 - 1025	Bianca Urquidi	PE137
51813	LAB	7/11/16 - 8/12/16	MTWR 1045 - 1310	Steve Johnson	PE137

KINA 158					
Yoga I 1 Unit					
Advisory: ENGL 035 or ENLA 100 or appropriate assessment; READ 023 or appropriate assessment					
Transfer to: UC (credit limit*), CSU (*The UC will grant a maximum of 4 units credit for PE activity courses)					
51687	LAB	6/6/16 - 7/8/16	MTWR 1045 - 1310	Carol McDowell	PE139
51689	LAB	6/6/16 - 7/8/16	MTWR 0800 - 1025	Rachel Lopez	PE139
51700	LAB	7/11/16 - 8/12/16	MTWR 0800 - 1025	Lisa Jay	PE139

KINA 159					
Cross Training for Intercollegiate Athletics 1 Unit					
Prerequisite: Participation in Intercollegiate Sports					
Advisory: READ 022 or appropriate assessment					
Transfers to: UC (credit limit*), CSU (*The UC will grant a maximum of 4 units credit for PE activity courses)					
51797	LAB	7/11/16 - 8/12/16	MTWR 1135 - 1400	Orlando Brenes	Soccer Field
51798	LAB	7/11/16 - 8/12/16	MWR 0700 - 1020	Jennifer Tanaka-Hoshijo	Soccer Field
51860	LAB	6/20/16 - 7/29/16	MTWR 1400 - 1605	Steve Johnson	G100
51861	LAB	6/20/16 - 7/29/16	MTWR 1145 - 1350	Richard Lowe	G100

KINA 230					
Lifelong Fitness Center II - Cardiovascular Fitness 1 Unit					
Prerequisite: KINA 130 or PE 130					
Advisory: ENGL 035 or ENLA 100 or appropriate assessment; READ 023 or appropriate assessment; MATH 020 or MATH 020C or appropriate assessment					
Transfers to: UC (credit limit*), CSU (*The UC will grant a maximum of 4 units credit for PE activity courses)					
51680	ARR	6/6/16 - 8/12/16		Kathy Pudelko	PE150

LITERATURE

Division of Communications & Languages

LIT 102					
Approaches to Literature 3 Units					
Prerequisite: ENGL 035 or ENLA 100 or appropriate assessment					
Advisory: READ 023 or appropriate assessment					
Transfers to: UC (credit limit*), CSU (*Students will receive credit from UC for only one of the following courses: LIT 102 or LIT 102H)					
50114	CLAS	7/11/16 - 8/12/16	MTWR 1800 - 2025	William Curington	A215
51165	WEB	6/20/16 - 8/12/16		Alonso Garcia	

LIT 142					
Introduction to Shakespeare 3 Units					
Prerequisite: ENGL 035 or ENLA 100 or appropriate assessment					
Advisory: READ 023 or appropriate assessment					
Transfers to: UC, CSU					
51733	CLAS	6/6/16 - 7/8/16	MTWR 0800 - 1025	Kenneth Pierson	A200

MANAGEMENT

Division of Business

MGMT 101					
Introduction to Business 3 Units					
Advisory: ENGL 035 or ENLA 100 or appropriate assessment; READ 023 or appropriate assessment; MATH 050 or MATH 050D or MATH 053 or appropriate assessment					
Transfers to: UC, CSU					
50494	WEB	6/6/16 - 8/12/16		Eugene Blackmun	
51509	WEB	6/6/16 - 8/12/16		Kathleen Colquitt	

MGMT 140					
Introduction to International Business 3 Units					
Advisory: ENGL 035 or ENLA 100 or appropriate assessment; READ 023 or appropriate assessment					
Transfers to: CSU					
50518	WEB	6/20/16 - 8/12/16		Julie Huang	

MGMT 290					
Cooperative Work Experience/Internship for Business Management Related Fields 1 Unit					

Advisory: ENGL 035 or ENLA 100 or appropriate assessment; READ 023 or appropriate assessment					
Transfers to: CSU					
Contact the CWE office regarding re-enrollment procedures.					
Student Unpaid Internship:					
1 Unit/60 hours; 2 Units/120 hours; 3 Units/180 hours; 4 Units/240 hours					
Student Paid Internship:					
1 Unit/75 hours; 2 Units/150 hours; 3 Units/225 hours; 4 Units/300 hours.					
50710	ARR	6/6/16 - 8/12/16		Andrew Feinour	B100
	CLAS	6/6/16 - 8/12/16		Andrew Feinour	B100
50712	ARR	6/6/16 - 8/12/16		Andrew Feinour	B100
	CLAS	6/6/16 - 8/12/16		Andrew Feinour	B100
51723	ARR	6/6/16 - 8/12/16		Andrew Feinour	B100
	CLAS	6/6/16 - 8/12/16		Andrew Feinour	B100
51724	ARR	6/6/16 - 8/12/16		Andrew Feinour	B100
	CLAS	6/6/16 - 8/12/16		Andrew Feinour	B100

MASS COMMUNICATIONS

Division of Communications & Languages

MSCM 103					
Survey of Motion Picture, Radio and Television 3 Units					
Advisory: ENGL 035 or ENLA 100 or appropriate assessment; READ 022 or appropriate assessment					
Transfers to: UC (credit limit*), CSU (*Students will receive credit from UC for only one of the following courses: MSCM 103 or MSCM 128)					
51719	CLAS	6/6/16 - 7/8/16	TWR 1100 - 1420	John Francis	B112

MATHEMATICS

Division of Mathematics & Sciences

MATH 020					
Basic Mathematics 3 Units					
Advisory: ENGL 030 or ENLA 034 or appropriate assessment; READ 021 or appropriate assessment; Individual modules to be taken in sequence.					
50362	CLAS	6/20/16 - 7/29/16	MTWR 1800 - 2005	Mark Towhidlow	S311
51134	CLAS	7/11/16 - 8/12/16	MTWR 0900 - 1125	Ronaldo Mangahas	S203
51763	CLAS	6/20/16 - 7/29/16	MTWR 1200 - 1405	Nancy Garcia	B115

MATH 020A					
Basic Mathematics A 1 Unit					
Advisory: ENGL 030 or ENLA 034 or appropriate assessment; READ 021 or appropriate assessment; Individual modules to be taken in sequence.					
50411	WEB	6/6/16 - 8/12/16		George Wang	S300

MATH 020B					
Basic Mathematics B 1 Unit					
Prerequisite: MATH 020A with a "C" or better					
Advisory: ENGL 030 or ENLA 034 or appropriate assessment; READ 021 or appropriate assessment; Individual modules to be taken in sequence. See MATH 020 for more information.					
50413	WEB	6/6/16 - 8/12/16		George Wang	S300

MATH 020C
Basic Mathematics C **1 Unit**
Prerequisite: MATH 020B with a "C" or better
Advisory: ENGL 030 or ENLA 034 or appropriate assessment; READ 021 or appropriate assessment; Individual modules to be taken in sequence. See MATH 020 for more information.
 50414 WEB 6/6/16 - 8/12/16 George Wang S300

MATH 030
Prealgebra **4 Units**
Prerequisite: MATH 020 or MATH 021 or MATH 020C with a "C" or better or appropriate assessment
Advisory: ENGL 030 or ENLA 034 or appropriate assessment; READ 023 or appropriate assessment
 Students may enroll in MATH 030 in a lecture section for four units of credit, or individual one-unit modules 030A, 030B, 030C, and 030D in the Math and Science Center (MSC).
 50363 CLAS 6/20/16 - 7/29/16 MTWR 1400 - 1650 Gregory Miller S303
 50365 CLAS 6/20/16 - 7/29/16 MTWR 1000 - 1250 Alan Archambault S301
 50366 CLAS 6/20/16 - 7/29/16 MTWR 1800 - 2050 Jack Gill S209
 51136 CLAS 6/20/16 - 7/29/16 MTWR 1330 - 1620 Jueji Hsiao B116
 51765 CLAS 6/20/16 - 7/29/16 MTWR 1130 - 1420 Jose Martinez SW108
 *51814 CLAS 6/20/16 - 7/29/16 MTWR 1600 - 1805 Matthew Pitassi S301
 WEB 6/20/16 - 7/29/16 Matthew Pitassi

MATH 030A
Prealgebra A **1 Unit**
Prerequisite: MATH 020 or MATH 021 or MATH 020C with a "C" or better or appropriate assessment
Advisory: ENGL 030 or ENLA 034 or appropriate assessment; READ 023 or appropriate assessment
 See MATH 030 for more information.
 50992 WEB 6/6/16 - 8/12/16 George Wang S300

MATH 030B
Prealgebra B **1 Unit**
Prerequisite: MATH 030A with a "C" or better
Advisory: ENGL 030 or ENLA 034 or appropriate assessment; READ 023 or appropriate assessment
 See MATH 030 for more information.
 50993 WEB 6/6/16 - 8/12/16 George Wang S300

MATH 030C
Prealgebra C **1 Unit**
Prerequisite: MATH 030B with a "C" or better
Advisory: ENGL 030 or ENLA 034 or appropriate assessment; READ 023 or appropriate assessment
 See MATH 030 for more information.
 50994 WEB 6/6/16 - 8/12/16 George Wang S300

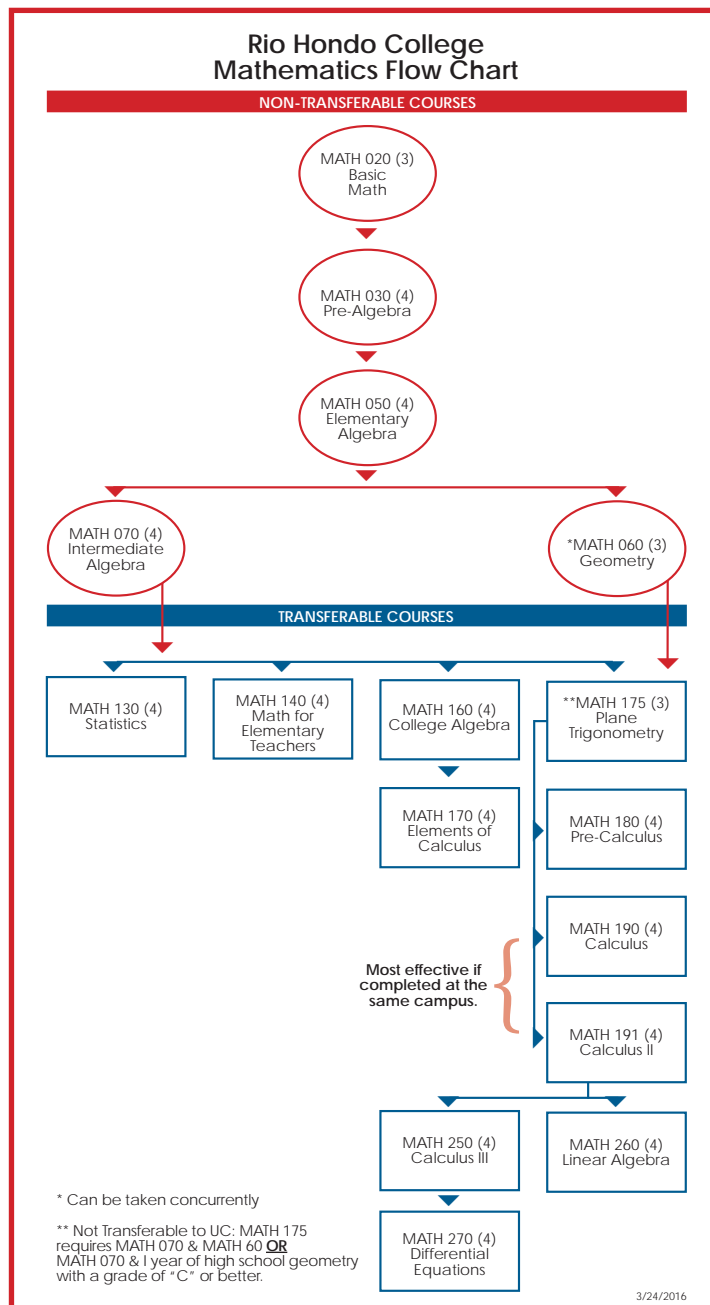
MATH 030D
Prealgebra D **1 Unit**
Prerequisite: MATH 030C with a "C" or better
Advisory: ENGL 030 or ENLA 034 or appropriate assessment; READ 023 or appropriate assessment
 See MATH 030 for more information.
 50995 WEB 6/6/16 - 8/12/16 George Wang S300

MATH 050
Elementary Algebra **4 Units**
Prerequisite: MATH 030 or MATH 030D or MATH 033 with a grade of "C" or better or appropriate assessment
Advisory: ENGL 030 or ENLA 034 or appropriate assessment; READ 023 or appropriate assessment
 Students may enroll in MATH 050 in a lecture section for four units of credit, or individual one-unit modules 050A, 050B, 050C, and 050D in the Math and Science Center (MSC) or online.
 50369 CLAS 7/11/16 - 8/12/16 MTWRF 0800 - 1120 Charles Fogel S200
 50370 CLAS 7/11/16 - 8/12/16 MTWRF 0900 - 1220 Amtul Chaudry S303
 50372 CLAS 6/20/16 - 7/29/16 MTWR 1400 - 1730 Ziauddin Khwaja S330
 50373 CLAS 7/11/16 - 8/12/16 MTWR 1130 - 1355 Hank Fung S200
 WEB 7/11/16 - 8/12/16 Hank Fung
 50374 CLAS 6/20/16 - 7/29/16 MTWR 1800 - 2130 Ann Pham S225
 50375 CLAS 6/20/16 - 7/29/16 MTWR 1800 - 2130 Geoffrey McWilliams S201
 50739 CLAS 6/20/16 - 7/29/16 MTWR 1000 - 1330 Ryan Bronkar S329
 51421 CLAS 6/6/16 - 7/8/16 MTWRF 0800 - 1120 Nguyen Vu S200
 51424 CLAS 6/6/16 - 7/8/16 MTWRF 1000 - 1320 Evan Skorka S201
 *51815 CLAS 6/6/16 - 7/8/16 MTWRF 0700 - 0905 Cameron English A210
 WEB 6/6/16 - 7/8/16 Cameron English
 *51851 CLAS 6/6/16 - 7/8/16 MTWR 0805 - 1030 Hank Fung EM101
 WEB 6/6/16 - 7/8/16 Hank Fung

***Hybrid Courses - in class and online learning.**

MATH 050A
Elementary Algebra A **1 Unit**
Prerequisite: MATH 030 or MATH 030D or MATH 033 with a grade of "C" or better or appropriate assessment
Advisory: ENGL 030 or ENLA 034 or appropriate assessment; READ 023 or appropriate assessment
 See MATH 050 for more information.
 50997 WEB 6/6/16 - 8/12/16 George Wang S300
 51766 WEB 6/6/16 - 8/12/16 Jan La Turno

MATH 050B
Elementary Algebra B **1 Unit**
Prerequisite: MATH 050A with a grade of "C" or better or appropriate assessment
Advisory: ENGL 030 or ENLA 034 or appropriate assessment; READ 023 or appropriate assessment
 See MATH 050 for more information.
 50998 WEB 6/6/16 - 8/12/16 George Wang S300
 51767 WEB 6/6/16 - 8/12/16 Jan La Turno



CRN	TYPE	DATES	DAYS/TIME	INSTRUCTOR	ROOM	CRN	TYPE	DATES	DAYS/TIME	INSTRUCTOR	ROOM
MATH 050C Elementary Algebra C 1 Unit <i>Prerequisite: MATH 050B with a grade of "C" or better or appropriate assessment</i> <i>Advisory: ENGL 030 or ENLA 034 or appropriate assessment; READ 023 or appropriate assessment</i> <i>See MATH 050 for more information.</i>						MATH 130 Statistics 4 Units <i>Prerequisite: MATH 070 or MATH 070D or MATH 073 with a grade of "C" or better or appropriate assessment</i> <i>Advisory: ENGL 101 or appropriate assessment; READ 101 or appropriate assessment</i> <i>Transfers to: UC (credit limit*), CSU (*Students will receive credit from UC for only one of the following courses: MATH 130 or MATH 130H)</i>					
50999	WEB	6/6/16 - 8/12/16		George Wang	S300	50393	CLAS	6/20/16 - 7/29/16	MTWR 1415 - 1705	Lynne Graham	S211
51149	WEB	6/6/16 - 8/12/16		Jan La Turno		50396	CLAS	6/20/16 - 7/29/16	MTWR 1800 - 2050	Evelyn Chau	S330
MATH 050D Elementary Algebra D 1 Unit <i>Prerequisite: MATH 050C with a grade of "C" or better or appropriate assessment</i> <i>Advisory: ENGL 030 or ENLA 034 or appropriate assessment; READ 023 or appropriate assessment</i> <i>See MATH 050 for more information.</i>						MATH 160 College Algebra 4 Units <i>Prerequisite: MATH 070 or MATH 070D or MATH 073 with a grade of "C" or better or appropriate assessment. Advisory: ENGL 035 or ENLA 100 or appropriate assessment; READ 023 or appropriate assessment</i> <i>Transfers to: UC (credit limit*), CSU (*Students will receive credit from UC for only one of the following courses: MATH 160 or MATH 165 or MATH 180)</i>					
51000	WEB	6/6/16 - 8/12/16		George Wang	S300	50400	CLAS	6/20/16 - 7/29/16	MTWRF 1100 - 1315	Hoa Ly	S211
51150	WEB	6/6/16 - 8/12/16		Jan La Turno		50401	CLAS	6/20/16 - 7/29/16	MTWR 1800 - 2050	Jesus Gutierrez	S200
MATH 070 Intermediate Algebra 4 Units <i>Prerequisite: MATH 050 or MATH 050D or MATH 053 with a grade of "C" or better or appropriate assessment</i> <i>Advisory: ENGL 035 or ENLA 100 or appropriate assessment; READ 023 or appropriate assessment</i> <i>Transfers to: CSU if taken prior to the Fall Semester, 1988</i> <i>Students may enroll in MATH 070 in a lecture section for four units of credit or in individual one-unit modules: MATH 070A, 070B, 070C, and 070D in the Math and Science Center (MSC) or online.</i>						MATH 175 Plane Trigonometry 3 Units <i>Prerequisite: MATH 060 and MATH 070 or MATH 070D or MATH 073 with a grade of "C" or better or appropriate assessment. Advisory: ENGL 035 or ENLA 100 or appropriate assessment; READ 023 or appropriate assessment</i> <i>Transfers to: CSU</i>					
50382	CLAS	6/20/16 - 7/29/16	MTWR 1115 - 1445	Robert Botello	S225	50402	CLAS	6/6/16 - 7/8/16	MTWRF 0800 - 1045	Lydia Gonzalez	S209
50385	CLAS	6/20/16 - 7/29/16	MTWR 0830 - 1200	Krysia Mayer	S330	51773	CLAS	6/20/16 - 7/29/16	MTWR 1400 - 1650	Ryan Bronkar	S329
50386	CLAS	6/20/16 - 7/29/16	MTWR 1100 - 1430	Kayvon Sarvi	S326	MATH 180 Pre-Calculus 4 Units <i>Prerequisite: MATH 175 with a grade of "C" or better or appropriate assessment</i> <i>Advisory: ENGL 035 or ENLA 100 or appropriate assessment; READ 101 or appropriate assessment</i> <i>Transfers to: UC (credit limit*), CSU (*Students will receive credit from UC for only one of the following courses: MATH 160 or MATH 165 or MATH 180)</i> This course is a prerequisite for MATH 190.					
0387	CLAS	6/6/16 - 7/8/16	MTWRF 0800 - 1120	Marguerite Tress	S303						
*51158	CLAS	6/20/16 - 7/29/16	MTWRF 0700 - 0905	Matthew Pitassi	S301	50403	CLAS	6/20/16 - 7/29/16	MTWR 0900 - 1150	Jupeil Hsiao	S226
	WEB	6/20/16 - 7/29/16		Matthew Pitassi		MATH 190 Calculus I 4 Units <i>Prerequisite: MATH 180 with a grade of "C" or better or appropriate assessment</i> <i>Advisory: ENGL 035 or ENLA 100 or appropriate assessment; READ 101 or appropriate assessment</i> <i>Transfers to: UC (credit limit*), CSU (*Students will receive credit from UC for only one of the following courses: MATH 170, MATH 190 or MATH 190H)</i>					
51159	CLAS	6/20/16 - 7/29/16	MTWR 1700 - 2030	Dimetros Dammena	S203	MUSIC Division of Arts & Cultural Programs					
51261	CLAS	6/20/16 - 7/29/16	MTWR 1300 - 1630	Alan Archambault	B114	<hr/> MUS 101 Fundamentals of Music 3 Units <i>Advisory: READ 023 or appropriate assessment</i> <i>Transfers to: UC, CSU</i>					
51425	CLAS	6/20/16 - 7/29/16	MTWR 1700 - 2030	Johnny Johnson	S329						
MATH 070A Intermediate Algebra A 1 Unit <i>Prerequisite: MATH 050 or MATH 050D or MATH 053 with a grade of "C" or better or appropriate assessment</i> <i>Advisory: ENGL 035 or ENLA 100 or appropriate assessment; READ 023 or appropriate assessment</i> <i>Transfers to: CSU if taken prior to the Fall Semester, 1988</i> <i>See MATH 070 for more information.</i>						MUS 133 Music Appreciation 3 Units <i>Advisory: ENGL 035 or ENLA 100 or appropriate assessment; READ 023 or appropriate assessment</i> <i>Transfers to: UC, CSU</i>					
51001	WEB	6/6/16 - 8/12/16		George Wang	S300	50219	CLAS	7/11/16 - 8/12/16	MTWR 0800 - 1025	Jannine Livingston	M124
MATH 070B Intermediate Algebra B 1 Unit <i>Prerequisite: MATH 070A with a grade of "C" or better or appropriate assessment</i> <i>Advisory: ENGL 035 or ENLA 100 or appropriate assessment; READ 023 or appropriate assessment</i> <i>Transfers to: CSU if taken prior to the Fall Semester, 1988</i> <i>See MATH 070 for more information.</i>						MUS 135 Music in Film 3 Units <i>Advisory: ENGL 035 or ENLA 100 or appropriate assessment; READ 023 or appropriate assessment</i> <i>Transfers to: UC, CSU</i>					
51002	WEB	6/6/16 - 8/12/16		George Wang	S300	51384	CLAS	6/6/16 - 7/8/16	MTWR 1045 - 1310	Frank Accardo	M124
51769	WEB	6/6/16 - 8/12/16		Jan La Turno		<hr/> *Hybrid Courses - in class and online learning.					
MATH 070C Intermediate Algebra C 1 Unit <i>Prerequisite: MATH 070B with a grade of "C" or better or appropriate assessment</i> <i>Advisory: ENGL 035 or ENLA 100 or appropriate assessment; READ 023 or appropriate assessment</i> <i>Transfers to: CSU if taken prior to the Fall Semester, 1988</i> <i>See MATH 070 for more information.</i>											
51003	WEB	6/6/16 - 8/12/16		George Wang	S300						
51770	WEB	6/6/16 - 8/12/16		Jan La Turno							
MATH 070D Intermediate Algebra D 1 Unit <i>Prerequisite: MATH 070C with a grade of "C" or better or appropriate assessment</i> <i>Advisory: ENGL 035 or ENLA 100 or appropriate assessment; READ 023 or appropriate assessment</i> <i>Transfers to: CSU if taken prior to the Fall Semester, 1988</i> <i>See MATH 070 for more information.</i>											
51004	WEB	6/6/16 - 8/12/16		George Wang	S300						
51771	WEB	6/6/16 - 8/12/16		Jan La Turno							

CRN	TYPE	DATES	DAYS/TIME	INSTRUCTOR	ROOM
MUS 140					
Beginning Voice I					
Advisory: ENGL 035 or ENLA 100 or appropriate assessment; READ 023 or appropriate assessment					
Transfers to: UC, CSU					
50230	CLAS	6/6/16 - 7/8/16	MTW 1000 - 1100	Kellori Dower	M109
	LAB	6/6/16 - 7/8/16	MTW 1105 - 1235	Kellori Dower	M109

1.5 Units

MUS 142					
Intermediate Voice I					
Prerequisite: MUS 140 with a grade of "C" or better					
Advisory: ENGL 035 or ENLA 100 or appropriate assessment; READ 023 or appropriate assessment					
Transfers to: UC, CSU					
50241	CLAS	6/6/16 - 7/8/16	MTW 1000 - 1100	Kellori Dower	M109
	LAB	6/6/16 - 7/8/16	MTW 1105 - 1235	Kellori Dower	M109

1.5 Units

MUS 145					
Beginning Piano I					
Advisory: READ 023 or appropriate assessment					
Transfers to: UC, CSU					
50264	CLAS	7/11/16 - 8/12/16	MTW 1045 - 1145	Jannine Livingston	M111
	LAB	7/11/16 - 8/12/16	MTW 1150 - 1320	Jannine Livingston	M111

1.5 Units

MUS 146					
Beginning Piano II					
Advisory: READ 023 or appropriate assessment					
Prerequisite: MUS 145 with a "C" or better					
Transfers to: UC, CSU					
51830	CLAS	7/11/16 - 8/12/16	MTW 1045 - 1145	Jannine Livingston	M111
	LAB	7/11/16 - 8/12/16	MTW 1150 - 1320	Jannine Livingston	M111

1.5 Units

MUS 147					
Intermediate Piano I					
Advisory: READ 023 or appropriate assessment					
Prerequisite: MUS 146 with a "C" or better					
Transfers to: UC, CSU					
51831	CLAS	7/11/16 - 8/12/16	MTW 1045 - 1145	Jannine Livingston	M111
	LAB	7/11/16 - 8/12/16	MTW 1150 - 1320	Jannine Livingston	M111

1.5 Units

MUS 150					
Beginning Guitar					
Advisory: ENGL 035 or ENLA 100 or appropriate assessment; READ 023 or appropriate assessment					
Transfers to: UC, CSU					
51722	CLAS	6/6/16 - 7/8/16	MTW 1330 - 1430	Frank Accardo	M109
	LAB	6/6/16 - 7/8/16	MTW 1440 - 1610	Frank Accardo	M109

1.5 Units

MUS 151					
Intermediate Guitar					
Prerequisite: MUS 150					
Advisory: ENGL 035 or ENLA 100 or appropriate assessment; READ 023 or appropriate assessment					
Transfers to: UC, CSU					
50503	CLAS	6/6/16 - 7/8/16	MTW 1330 - 1430	Frank Accardo	M109
	LAB	6/6/16 - 7/8/16	MTW 1440 - 1610	Frank Accardo	M109

1.5 Units

MUS 181					
Applied Music I					
Prerequisite: Audition					
Corequisite: Enrollment in a Rio Hondo College Large Ensemble (either MUS 116 or MUS 117 or MUS 120 or MUS 134 or MUS 138 or MUS 139)					
Advisory: ENGL 030 or ENLA 034 or appropriate assessment; READ 023 or appropriate assessment					
Transfers to: UC, CSU					
51832	ARR	6/6/16 - 7/8/16		Kellori Dower	

2 Units

MUS 240					
Advanced Voice I					
Prerequisite: MUS 142 with a grade of "C" or better					
Advisory: READ 023 or appropriate assessment					
51829	CLAS	6/6/16 - 7/8/16	R 0930 - 1100	Kellori Dower	M109
		6/6/16 - 7/8/16	MTW 1000 - 1100	Kellori Dower	M109
	LAB	6/6/16 - 7/8/16	MTW 1105 - 1235	Kellori Dower	M109

2 Units

NON-CREDIT COURSES

Continuing Education

NBAS 009					
College Refresher Basic Skills/Individual Study					
50502	ARR	6/6/16 - 8/12/16		Moises Mata	LR114

0 Units

NBAS 010					
College Refresher Math/Individual Study					
50694	ARR	6/6/16 - 8/12/16		George Wang	S300

0 Units

NCOA 001					
Painting for Older Adults					
50299	CLAS	6/6/16 - 8/12/16	W 1600 - 1745	Leslie Gardner-Lemus	
50546	CLAS	6/6/16 - 8/12/16	M 1400 - 1630	La Mirada Activity Center	
50744	CLAS	6/6/16 - 8/12/16	T 1300 - 1530	Leslie Gardner-Lemus	
51194	CLAS	6/6/16 - 8/12/16	R 1300 - 1500	G. Velasco Neighborhood Ctr	
51865	CLAS	6/6/16 - 8/12/16	MW 1000 - 1200	Leslie Gardner-Lemus	B110

0 Units

NCOA 008					
Computers Unlimited for Older Adults					
51862	CLAS	6/6/16 - 7/8/16	TR 1230 - 1530	Alejandro Lopez	SW103
51866	CLAS	6/6/16 - 8/12/16	F 1000 - 1200	Alejandro Lopez	Mayberry Park

0 Units

NCOA 010					
Hatha Yoga for Older Adults					
50266	CLAS	6/6/16 - 8/12/16	T 1130 - 1230	Dolly Lai	
50268	CLAS	6/6/16 - 8/12/16	M 0900 - 1100	La Mirada Activity Center	
50270	CLAS	6/6/16 - 8/12/16	T 1300 - 1400	Staff	Adventure Park

0 Units

NCOA 012					
Physical Fitness for the Older Adult					
50282	CLAS	6/6/16 - 8/12/16	TR 0930 - 1045	Patricia Usary	
50288	CLAS	6/6/16 - 8/12/16	F 0930 - 1030	Posada Retirement Community	
50293	CLAS	6/6/16 - 8/12/16	T 1630 - 1730	Patricia Usary	
51820	CLAS	6/6/16 - 8/12/16	TR 1730 - 1830	Sorensen Park	
51868	CLAS	6/6/16 - 8/12/16	R 0900 - 1030	Patricia Usary	

0 Units

NESL 035					
ESL Multi-Level					
50208	CLAS	6/6/16 - 8/12/16	MW 0900 - 1130	Eugene Olea	
50215	CLAS	6/6/16 - 7/8/16	MW 1230 - 1530	Community Resource Ctr	
50226	CLAS	6/6/16 - 8/12/16	MW 1800 - 2030	Alejandro Lopez	
50236	CLAS	6/27/16 - 7/15/16	TR 0800 - 1100	So. Whittier Education Ctr	
50238	CLAS	6/6/16 - 7/08/16	F 0900 - 1200	Eugene Olea	

0 Units

NHSL 030					
Nursing Skills Lab					
51776	CLAS	6/6/16 - 7/29/16	MF 0800 - 1430	Gail Biesemeyer	

0 Units

NVOC 005					
Theatre Production Workshop					
50789	ARR	6/27/16 - 8/8/16		William Korf	

0 Units

NVOC 038					
Real Estate Practice					
51858	CLAS	6/21/16 - 7/28/16	TR 1800 - 2200	Jaime Carranza	B110

0 Units

NVOC 150					
AutoCAD for Basic CADD Applications					
51193	CLAS	6/20/16 - 7/29/16	TWR 0800 - 1100	Joseph Sunyogh	S307
	LAB	6/20/16 - 7/29/16	TWR 1105 - 1405	Joseph Sunyogh	S307

0 Units

PHILOSOPHY

Division of Behavioral & Social Sciences

PHIL 101					
Introduction to Philosophy 3 Units					
Advisory: ENGL 101 or appropriate assessment; READ 023 or appropriate assessment					
Transfers to: UC, CSU					
51061	CLAS	7/11/16 - 8/12/16	TR 0800 - 1025	Theodore Preston	A207
	WEB	7/11/16 - 8/12/16		Theodore Preston	
51062	WEB	6/20/16 - 8/12/16		Scott Dixon	
51063	WEB	6/20/16 - 8/12/16		Scott Dixon	

PHIL 112					
Introduction to Logic 3 Units					
Advisory: ENGL 035 or ENLA 100 or appropriate assessment; READ 023 or appropriate assessment; MATH 030 or MATH 030D or MATH 033 or appropriate assessment					
Transfers to: UC, CSU					
51823	CLAS	6/6/16 - 7/8/16	MTWR 1045 - 1320	Scott Dixon	PE105

PHIL 120					
Introduction to Ethics 3 Units					
Advisory: ENGL 101 or appropriate assessment; READ 023 or appropriate assessment					
Transfers to: UC, CSU					
51064	WEB	6/20/16 - 8/12/16		Theodore Preston	

PHOTOGRAPHY

Division of Arts & Cultural Programs

PHTO 190					
Beginning Photography 3 Units					
Advisory: READ 023 or appropriate assessment; ART 120					
Transfers to: UC, CSU					
50325	CLAS	6/6/16 - 7/8/16	MTWR 0800 - 0930	Chris Acuna-Hansen	B017
	LAB	6/6/16 - 7/8/16	MTWR 0940 - 1300	Chris Acuna-Hansen	B017

PHTO 191					
Intermediate Photography 3 Units					
Prerequisite: PHTO 190					
Advisory: READ 023 or appropriate assessment					
Transfers to: UC, CSU					
50330	CLAS	6/6/16 - 7/8/16	MTWR 0800 - 0930	Chris Acuna-Hansen	B017
	LAB	6/6/16 - 7/8/16	MTWR 0940 - 1300	Chris Acuna-Hansen	B017

PHYSICS

Division of Mathematics & Sciences

PHY 120					
Physics for Everyday Use 4 Units					
Prerequisite: MATH 050 or MATH 050D or MATH 053 with a grade of "C" or better or appropriate assessment					
Advisory: ENGL 035 or ENLA 100 or appropriate assessment; READ 023 or appropriate assessment					
Transfers to: UC (credit limit*), CSU (*Students will receive no credit from UC for PHY 120 if taken after PHY 150 or PHY 211)					
50345	CLAS	6/20/16 - 7/29/16	MTWR 1700 - 1905	Walter Christensen	S226
	LAB	6/20/16 - 7/29/16	MTWR 1915 - 2120	Walter Christensen	S224

POLICE ACADEMY

Division of Public Safety

PAC 043					
Advanced Officers Course 0.148 Units					
Advisory: ENGL 035 or ENLA 100 or appropriate assessment; PAC 040 or PAC 075B,075C					
51837	CLAS	6/23/16 - 6/23/16	R 0800 - 1600	Robert Reid	

POLITICAL SCIENCE

Division of Behavioral & Social Sciences

POLS 110					
Government of the United States 3 Units					
Advisory: ENGL 035 or ENLA 100 or appropriate assessment; READ 023 or appropriate assessment					
Transfers to: UC (credit limit*), CSU (*Students will receive credit from UC for only one of the following courses: POLS 110 or POLS 110H)					
50062	CLAS	6/20/16 - 7/29/16	MW 1800 - 2215	Anika Jackson	A212
50063	CLAS	6/20/16 - 7/29/16	TR 1800 - 2215	Timothy Shaw	A212
50991	WEB	6/20/16 - 8/12/16		Colin Young	
51065	CLAS	7/11/16 - 8/12/16	MTWR 0800 - 1025	Lisa Ross	B109
51066	CLAS	7/11/16 - 8/12/16	MTWR 0800 - 1025	Jose Baca	A212
51067	CLAS	7/11/16 - 8/12/16	MTWR 1045 - 1310	Lisa Ross	B109
51068	WEB	6/20/16 - 8/12/16		Colin Young	
51069	WEB	6/20/16 - 8/12/16		Jose Baca	
51070	WEB	6/20/16 - 8/12/16		Jose Baca	
51750	CLAS	6/9/16 - 7/13/16	MTWR 1055 - 1330	Ybonne Torres	
				El Rancho High School	
51801	CLAS	6/6/16 - 7/8/16	MTWR 1045 - 1310	Natasha Ramos-Bernal	A212
51848	CLAS	6/6/16 - 7/8/16	MTWR 0800 - 1030	David Kelly	
				El Monte Educational Ctr	

PSYCHOLOGY

Division of Behavioral & Social Sciences

PSY 101					
Introductory Psychology 3 Units					
Advisory: ENGL 035 or ENLA 100 or appropriate assessment; READ 023 or appropriate assessment					
Transfers to: UC (credit limit*), CSU (*Students will receive credit from UC for only one of the following courses: PSY 101 or PSY 101H)					
50072	CLAS	6/20/16 - 7/29/16	MW 1800 - 2215	Mark Carlock	A228
50073	CLAS	6/20/16 - 7/29/16	TR 1800 - 2215	Janice Willis	A228
51071	CLAS	6/6/16 - 7/8/16	MTWR 1045 - 1310	Debra Kaiser	A228
51074	CLAS	6/6/16 - 7/8/16	MTWR 0800 - 1025	Brian Adams	A228
51075	WEB	6/6/16 - 8/12/16		Kevin Smith	
51076	WEB	6/6/16 - 8/12/16		Kevin Smith	
51077	WEB	6/6/16 - 8/12/16		Kevin Smith	
51515	CLAS	7/11/16 - 8/12/16	MTWR 0800 - 1025	Debra Kaiser	A228
51850	WEB	6/6/16 - 8/12/16		Michelle Pilati Corselli	
51852	CLAS	6/6/16 - 7/8/16	MTWR 1045 - 1310	Brian Coaxum	
				El Monte Educational Ctr	

PSY 112					
Lifespan Development 3 Units					
Advisory: ENGL 035 or ENLA 100 or appropriate assessment; READ 023 or appropriate assessment					
Transfers to: UC (credit limit*), CSU (*Students will receive credit from UC for only one of the following courses: PSY 112 or CD 106)					
51078	WEB	6/6/16 - 8/12/16		Michelle Pilati Corselli	
51079	CLAS	7/11/16 - 8/12/16	MTWR 1045 - 1310	Karen Beck	A228
51849	WEB	6/6/16 - 8/12/16		Michelle Pilati Corselli	

RADIO

Division of Communications & Languages

RDIO 299					
Directed Study: Radio 1 Unit					
Transfers to: UC, CSU					
Students may take directed study courses for a maximum of three (3) units within a discipline, and may not accumulate more than a total of nine (9) units college wide.					
51825	ARR	6/6/16 - 7/8/16		John Francis	

READING

Division of Communications & Languages

READ 022
Intermediate Reading Skills **3 Units**
Prerequisite: Successful completion of READ 021 with a "P" or appropriate placement through the Rio Hondo assessment process. Corequisite: READ 022L
This is a non-degree credit course and is offered on a pass/no pass basis. All students are required to concurrently enroll in READ 022L.

50138	CLAS	6/20/16 - 7/29/16	TWR 0800 - 1050	Joyce Lim	LR119
50140	CLAS	6/6/16 - 7/8/16	MTWR 0920 - 1145	Wells Sloniger	LR123

READ 022L
Reading Lab **0.5 Units**
Prerequisite: Successful completion of READ 021 with a "P" or appropriate placement through the Rio Hondo assessment process
Corequisite: READ 022
This is a non-degree applicable course offered on a pass / no pass basis.

50151	LAB	6/20/16 - 7/29/16	TWR 1100 - 1215	Joyce Lim	LR118
50485	LAB	6/6/16 - 7/8/16	MTWR 0800 - 0910	Wells Sloniger	LR118

READ 023
Reading College Textbooks **3 Units**
Prerequisite: READ 022 or appropriate assessment
This is a non-degree credit course and is offered on a pass / no-pass basis.

50152	CLAS	6/20/16 - 7/29/16	TWR 1500 - 1750	Sharon Bell	LR119
50164	CLAS	6/6/16 - 7/8/16	MTWR 0800 - 1025	Stephen Koelle	A206
50165	WEB	6/20/16 - 8/12/16		Marie Eckstrom	
50168	CLAS	6/20/16 - 7/29/16	MW 1800 - 2215	Sharon Bell	LR119
51714	CLAS	7/11/16 - 8/12/16	MTWR 1500 - 1725	Stephen Koelle	LR123

READ 101
Critical Reading **3 Units**
Prerequisite: READ 023 or appropriate assessment
Advisory: ENGL 035 or ENLA 100 or appropriate assessment
Transfers to: CSU

50169	CLAS	6/20/16 - 7/29/16	TWR 1500 - 1750	To Be Assigned	A214
-------	------	-------------------	-----------------	----------------	------

SOCIOLOGY

Division of Behavioral & Social Sciences

SOC 101
Introduction to Sociology **3 Units**
Advisory: ENGL 035 or ENLA 100 or appropriate assessment; READ 023 or appropriate assessment
Transfers to: UC (credit limit), CSU (*Students will receive credit from UC for only one of the following courses: SOC 101 or SOC 101H)*

50083	CLAS	6/20/16 - 7/29/16	MW 1800 - 2215	Ruzanna Karmiryran	A229
50749	WEB	6/20/16 - 8/12/16		Melissa Juarez	
50750	WEB	6/20/16 - 8/12/16		Melissa Juarez	
51082	CLAS	6/6/16 - 7/8/16	MTWR 0800 - 1025	Brian Brutlag	A229
51512	CLAS	6/6/16 - 7/8/16	MTWR 1045 - 1310	Brian Brutlag	A229

SOC 102
Major Social Problems **3 Units**
Advisory: ENGL 035 or ENLA 100 or appropriate assessment; READ 023 or appropriate assessment
Transfers to: UC, CSU

51019	WEB	6/20/16 - 8/12/16		Daniel Roddick	
51804	CLAS	7/11/16 - 8/12/16	MTWR 1045 - 1310	Joy Tshuhako	A229
51805	CLAS	6/20/16 - 7/29/16	TR 1800 - 2215	Melissa Govea	A229

SOC 114
Marriage, Family and Intimate Relationships **3 Units**
Advisory: ENGL 035 or ENLA 100 or appropriate assessment; READ 023 or appropriate assessment
Transfers to: UC, CSU

51083	WEB	6/20/16 - 8/12/16		Melissa Juarez	
51084	WEB	6/20/16 - 8/12/16		Melissa Juarez	
51803	CLAS	7/11/16 - 8/12/16	MTWR 0800 - 1025	Kevin Barman	A229

SPANISH

Division of Communications & Languages

SPAN 101
Spanish I **4 Units**
Advisory: ENGL 030 or ENLA 034 or appropriate assessment; READ 023 or appropriate assessment
Transfers to: UC (credit limit), CSU (*Students will receive credit from UC for only one of the following sequences of courses: SPAN 101 and SPAN 102 or SPAN 130 and SPAN 131)*

50186	CLAS	6/20/16 - 7/29/16	TWR 0925 - 1315	Pablo Roldan	A202
	LAB	6/20/16 - 7/29/16	TR 0800 - 0915	Pablo Roldan	LR117
50189	CLAS	6/20/16 - 7/29/16	MTWR 1800 - 2050	Rafael Fernandez	A200
	LAB	6/20/16 - 7/29/16	TR 2055 - 2210	Rafael Fernandez	LR117
50198	CLAS	6/6/16 - 7/8/16	MTWR 0800 - 1120	Sandra Lew	
	LAB	6/6/16 - 7/8/16	MTW 1130 - 1230	Santa Fe High School	
50204	CLAS	6/6/16 - 7/8/16	MTWR 0800 - 1120	Sandra Lew	
	LAB	6/6/16 - 7/8/16	MTW 1130 - 1230	Santa Fe High School	
50209	CLAS	6/6/16 - 7/8/16	MTWR 0800 - 1120	Martha Arrona	
	LAB	6/6/16 - 7/8/16	MTW 1130 - 1230	Pioneer High School	
51138	WEB	6/20/16 - 8/12/16		Martha Arrona	
	WEBL	6/20/16 - 8/12/16		Pioneer High School	
51139	WEB	6/20/16 - 8/12/16		William Ripley	
	WEBL	6/20/16 - 8/12/16		California High School	
51140	WEB	6/20/16 - 8/12/16		William Ripley	
	WEBL	6/20/16 - 8/12/16		California High School	
				Blanca De Los Santos	
				Blanca De Los Santos	
				Blanca De Los Santos	
				Blanca De Los Santos	
				Mariano Zaro	
				Mariano Zaro	

SPAN 102
Spanish II **4 Units**
Prerequisite: Successful completion of SPAN 101 or two years of high school Spanish
Transfers to: UC (credit limit), CSU (*Students will receive credit from UC for only one of the following sequences of courses: SPAN 101 and SPAN 102 or SPAN 130 and SPAN 131)*

50346	WEB	6/20/16 - 8/12/16		Lydia Llerena	
	WEBL	6/20/16 - 8/12/16		Lydia Llerena	
51117	CLAS	7/11/16 - 8/12/16	MTWR 0800 - 1120	Margarita Flores	A216
	LAB	7/11/16 - 8/12/16	MTWR 1130 - 1220	Margarita Flores	LR117
51141	WEB	6/20/16 - 8/12/16		Lydia Llerena	
	WEBL	6/20/16 - 8/12/16		Lydia Llerena	

SPAN 130
Spanish for Heritage Speakers I **3 Units**
Advisory: ENGL 030 or ENLA 034 or appropriate assessment
Transfers to: UC (credit limit), CSU (*Students will receive credit from UC for only one of the following sequences of courses: SPAN 101 and SPAN 102 or SPAN 130 and SPAN 131)*

51142	WEB	6/20/16 - 8/12/16		Mariano Zaro	
-------	-----	-------------------	--	--------------	--

SPEECH

Division of Communications & Languages

SPCH 100
Interpersonal Communication **3 Units**
Advisory: ENGL 035 or ENLA 100 or appropriate assessment; READ 022 or appropriate assessment
Transfers to: UC, CSU

51717	CLAS	6/6/16 - 7/8/16	MTWR 1500 - 1725	Gilbert Puga	A227
51857	CLAS	6/6/16 - 7/8/16	MTWR 1200 - 1425	To Be Assigned	EM103
				El Monte Educational Ctr	

CRN	TYPE	DATES	DAYS/TIME	INSTRUCTOR	ROOM
SPCH 101					
Public Speaking 3 Units					
Advisory: ENGL 035 or ENLA 100 or appropriate assessment; READ 023 or appropriate assessment					
Transfers to: UC (credit limit*), CSU (*Students will receive credit from UC for only one of the following courses: SPCH 101, SPCH 101H or SPCH 102)					
50306	CLAS	6/6/16 - 7/8/16	MTWR 0800 - 1025	Wendy Lai	A218
50307	CLAS	6/6/16 - 7/8/16	MTWR 1100 - 1325	Gilbert Puga	A220
50308	CLAS	7/11/16 - 8/12/16	MTWR 0800 - 1025	Gilbert Puga	A220
50311	CLAS	7/11/16 - 8/12/16	MTWR 1100 - 1325	Gilbert Puga	A218
50313	CLAS	6/6/16 - 7/8/16	MTWR 1100 - 1325	Wendy Lai	A211
50314	CLAS	6/20/16 - 7/29/16	T 1130 - 1410	Lisette Acevedo	A216
50316	CLAS	6/6/16 - 7/8/16	MTWR 1500 - 1725	Grant Tovmasian	A218
50319	CLAS	6/6/16 - 7/8/16	MTWR 1500 - 1725	Casey Jones	A220
50326	CLAS	6/6/16 - 7/8/16	MTWR 0800 - 1025	Mary Woudenberg	SW107
				So. Whittier Educational Ctr	
50327	CLAS	6/6/16 - 7/8/16	MTWR 1800 - 2025	Joshua Gallegos	A220
50333	CLAS	6/6/16 - 7/8/16	MTWR 1800 - 2025	James Ameen	A216
50335	CLAS	7/11/16 - 8/12/16	MTWR 1800 - 2025	Grant Tovmasian	A213

SPCH 140					
Argumentation and Debate 3 Units					
Advisory: ENGL 035 or ENLA 100 or appropriate assessment; READ 023 or appropriate assessment					
Transfers to: UC (credit limit*), CSU (*Students will receive credit from UC for only one of the following courses: SPCH 140 or SPCH 240)					
50336	CLAS	6/6/16 - 7/8/16	MTWR 1100 - 1325	Grant Tovmasian	A214

SPCH 240					
Argumentation and Discussion 3 Units					
Prerequisite: SPCH 140 with a grade of "C" or better					
Transfers to: UC (credit limit*), CSU (*Students will receive credit from UC for only one of the following courses: SPCH 140 or SPCH 240)					
50337	CLAS	6/6/16 - 7/8/16	MTWR 1100 - 1325	Grant Tovmasian	A214

THEATRE

Division of Arts & Cultural Programs

THTR 101					
Theatre Arts Appreciation 3 Units					
Advisory: ENGL 030 or ENLA 034 or appropriate assessment; READ 023 or appropriate assessment					
50338	CLAS	7/11/16 - 8/12/16	MTWR 0800 - 1025	Kirk Vichengrad	M109

THTR 150					
Theatre Crafts I 3 Units					
Advisory: ENGL 030 or ENLA 034 or appropriate assessment; READ 022 or appropriate assessment					
Transfers to: UC, CSU					
51726	CLAS	6/20/16 - 8/12/16	MT 1415 - 1515	Kerry Farmer	M102
	LAB	6/20/16 - 8/12/16	WR 1415 - 1810	Kerry Farmer	M102
		6/20/16 - 8/12/16	MT 1520 - 1745	Kerry Farmer	M102

THTR 151					
Theatre Crafts II 3 Units					
Prerequisite: THTR 150					
Advisory: ENGL 030 or ENLA 034 or appropriate assessment; READ 022 or appropriate assessment					
Transfers to: UC, CSU					
51727	CLAS	6/20/16 - 8/12/16	MT 1415 - 1515	Kerry Farmer	M102
	LAB	6/20/16 - 8/12/16	WR 1415 - 1810	Kerry Farmer	M102
		6/20/16 - 8/12/16	MT 1520 - 1745	Kerry Farmer	M102

THTR 152					
Theatre Crafts III 3 Units					
Prerequisite: THTR 151					
Advisory: ENGL 030 or ENLA 034 or appropriate assessment; READ 022 or appropriate assessment					
Transfers to: UC, CSU					
51728	CLAS	6/20/16 - 8/12/16	MT 1415 - 1515	Kerry Farmer	M102
	LAB	6/20/16 - 8/12/16	WR 1415 - 1810	Kerry Farmer	M102
		6/20/16 - 8/12/16	MT 1520 - 1745	Kerry Farmer	M102

THTR 159					
Stage Crew Activity 1 Unit					
Advisory: READ 022 or appropriate assessment					
Transfers to: UC, CSU					
51729	ARR	6/27/16 - 8/8/16		William Korf	

THTR 170					
Theatre Rehearsal and Performance 3 Units					
Advisory: ENGL 030 or ENLA 034 or appropriate assessment; READ 023 or appropriate assessment; THTR 110 Limitations: Acting Students must audition and Technical Students must interview prior to participating in the course					
Transfers to: UC, CSU					
This course may be repeated three times for credit.					
51841	CLAS	6/20/16 - 7/29/16	MTW 1815 - 1905	William Korf	M101
	LAB	6/20/16 - 7/29/16	R 1815 - 2300	William Korf	M101
		6/20/16 - 7/29/16	MTW 1910 - 2315	William Korf	M101

WELDING

Division of Career & Technical Education

WELD 040					
Introduction to Welding Processes 2 Units					
Advisory: ENGL 035 or ENLA 100 or appropriate assessment; READ 023 or appropriate assessment					
51091	CLAS	6/20/16 - 8/12/16	TR 0830 - 0930	Mauricio Reyes	T114
	LAB	6/20/16 - 8/12/16	TR 0935 - 1225	Mauricio Reyes	T114
51092	CLAS	6/20/16 - 8/12/16	TR 1800 - 1900	Mauricio Reyes	T114
	LAB	6/20/16 - 8/12/16	TR 1905 - 2155	Mauricio Reyes	T114

What do you get when you mix a little **scary** with a little **SHAKESPEARE** and a lot of **Silly**?



You get

‘MMM Beth’!

A Wacky retelling of ‘The Scottish Play’!

Be part of Rio Hondo College’s summer production!

Auditions

begin June 20! Performances are August 3, 4, 5 and 6.

Sign up for

THTR 170 (CRN # 51841) to act or be part of the running crew.

First meeting June 20 at 6:30pm in the Wray Theatre.

Or

THTR 150 (CRN # 51726) to help create sets, lights and sound.

First meeting June 20 in the Wray Theatre Shop at 2pm.

We need actors, stage managers, crew and anyone who wants to help create something fun and exciting.

Contact William Korf (wkorf@riohondo.edu) or Kerry Farmer (Kfarmer@riohondo.edu) for more information.

CAMPUS DIRECTORY



BUILDING LEGEND



A Administration	BS Bookstore	L L Building	PB Information/Parking Booth
AJ Administration of Justice	CI Campus Inn	LQ Lower Quad	PE Physical Education
AJA Administration of Justice Annex	CP Central Plant	LRC Learning Resource Center	S Science and Math
AT Applied Technology	CR Central Receiving	M Music	SS Student Services
ART Art	CDC Child Development Center	MC Modular Classrooms	SU Student Union
B Business	CT Courts (Tennis)	MN Maintenance	UQ Upper Quad
BB Black Box Theater	G Gymnasium	O Observatory	W Wray Memorial Theater



3600 Workman Mill Rd.
Whittier, CA 90601-1616

Rio Hondo
Community College District
Board of Trustees
Mary Ann Pacheco
Norma Edith Garcia
Gary Mendez
Vicky Santana
Madeline Shapiro

Melissa DeLeon
Student Member

Teresa Dreyfuss
Superintendent/President

Registration Information Inside
Dated Material

Non-Profit Organization
U.S. Postage

PAID

Whittier, CA
Permit No. 70
ECRWSS

RESIDENTIAL CUSTOMER



START RIO... GO ANYWHERE!

It's time to apply and register!

Summer open registration begins April 28, 2016

Classes begin June 6, 20 and July 11

(Five summer sessions available)

Fall open registration begins August 11, 2016

Classes begin August 20

High school seniors registering for Fall 2016 may qualify for priority registration. Contact the Rio Hondo College Outreach Office at (562) 463-4693 or the college counselor at your high school.

WWW.RIOHONDO.EDU